

Minnesota's Farm to Food Shelf Program

February 2025



OUR MISSION

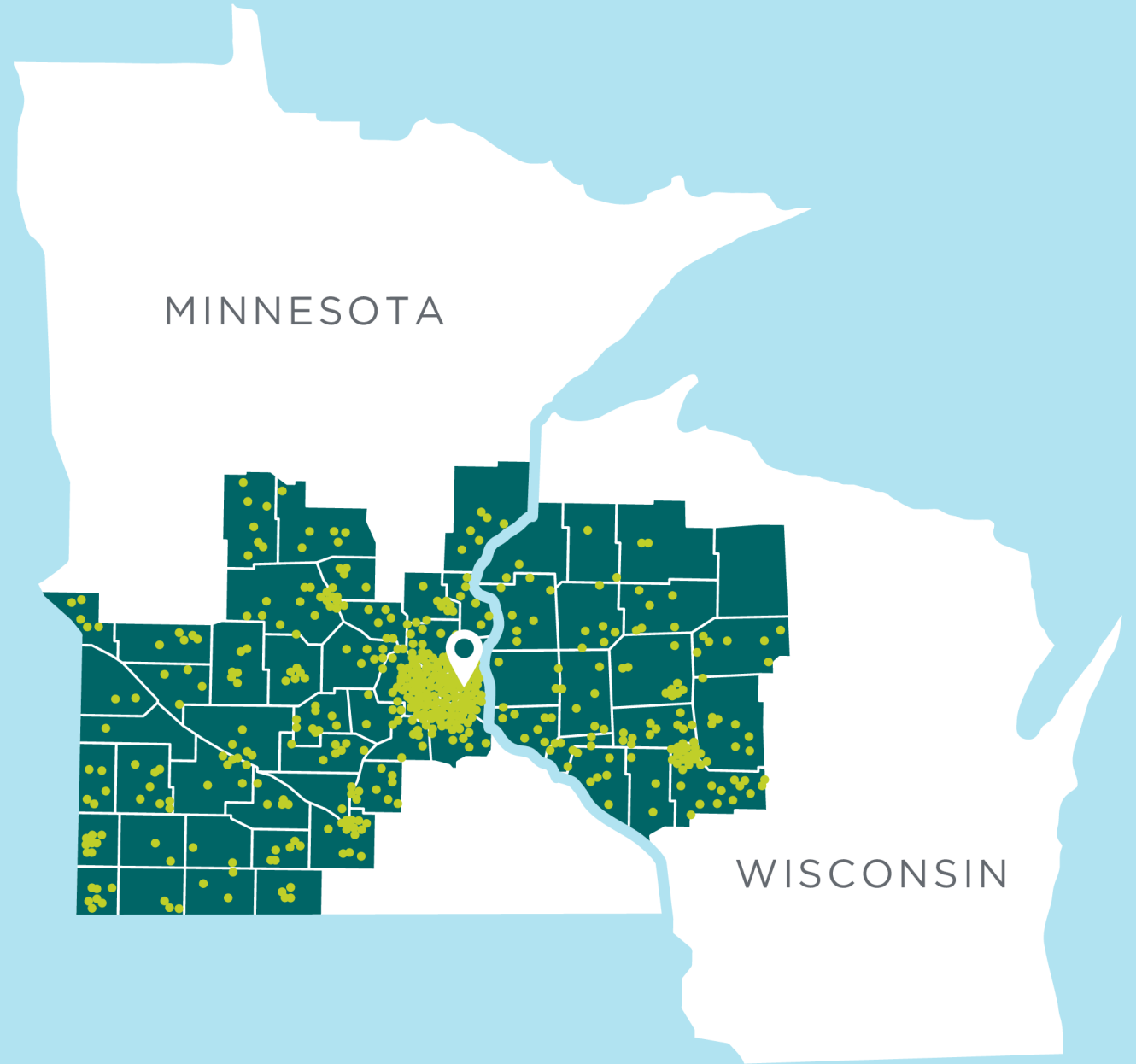
END
HUNGER
together

As a member of Feeding America, we are part of a nationwide network of more than 200 food banks.



Our Role

As Minnesota's largest food bank, we are a unifier, bringing organizations and people together across the state to end hunger.



THE PATH TO HUNGER RELIEF



FOOD DONATIONS
& PURCHASES



VOLUNTEER
CENTER

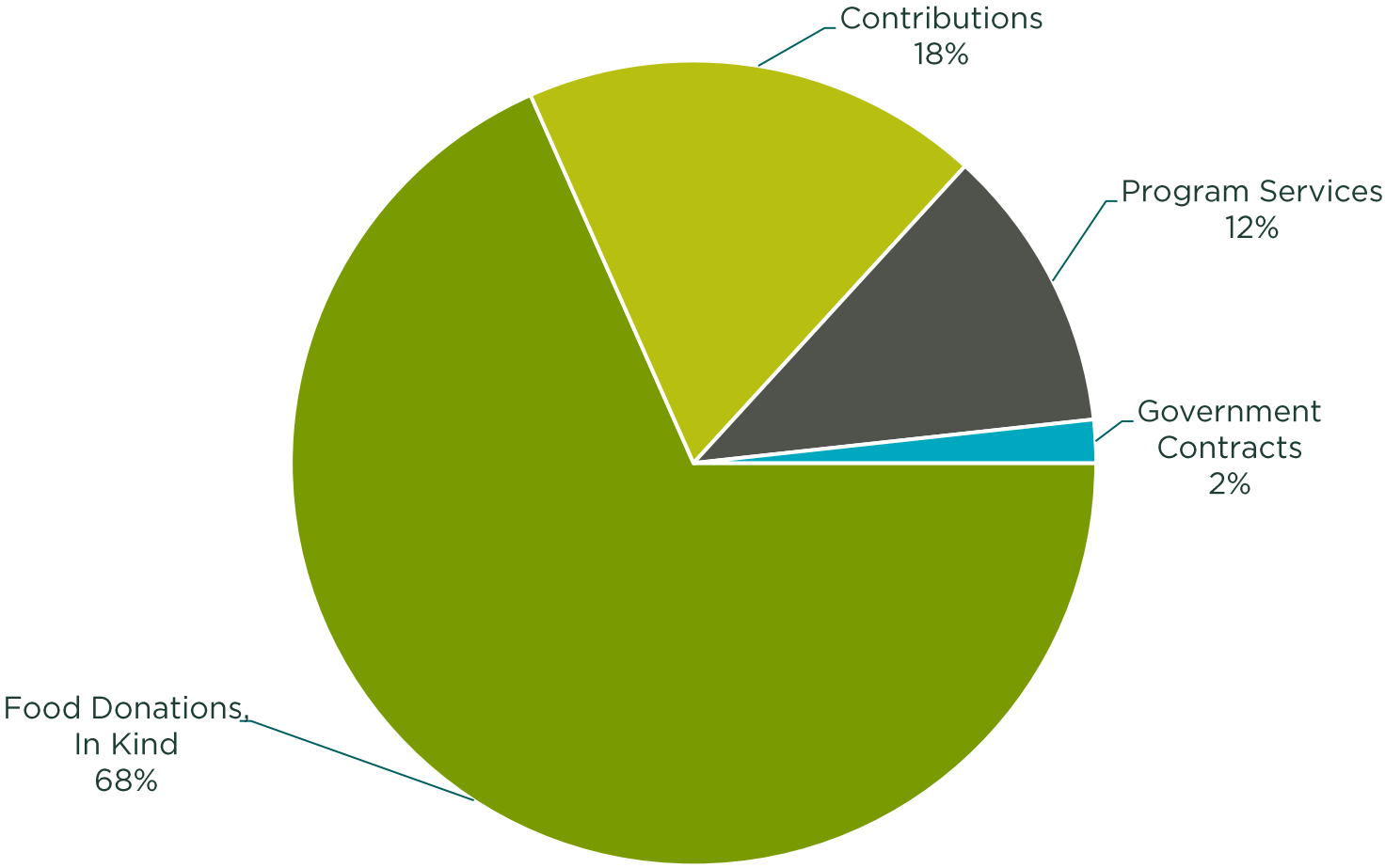


FOOD SHELVES
& HUNGER-RELIEF
ORGANIZATIONS



OUR NEIGHBOR'S
TABLE

REVENUE FY24 (OCT 23-SEPT 24)



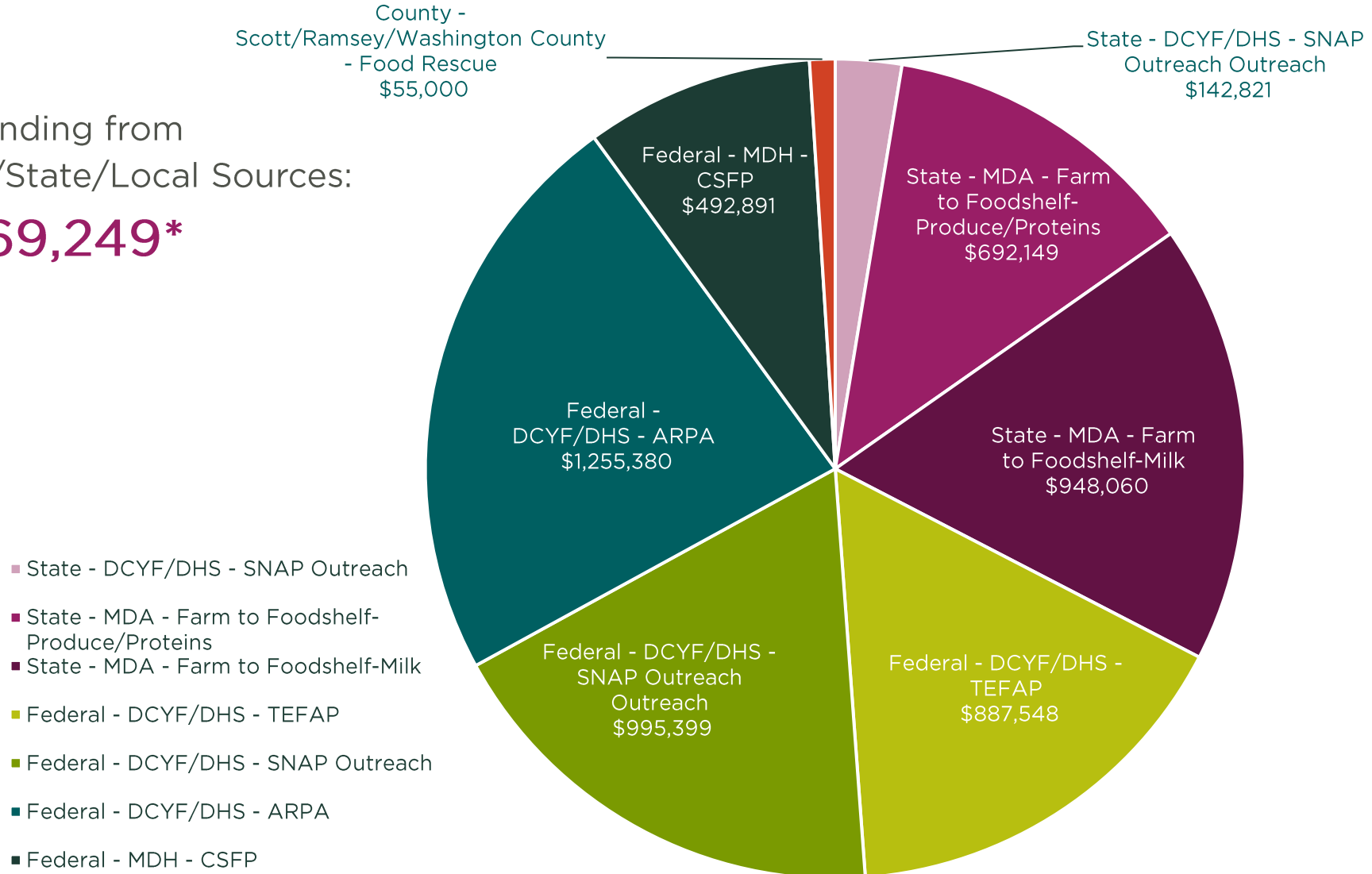
- Food Donations, In Kind
- Contributions
- Program Services
- Government Contracts



GOVERNMENT FUNDING IN FY24

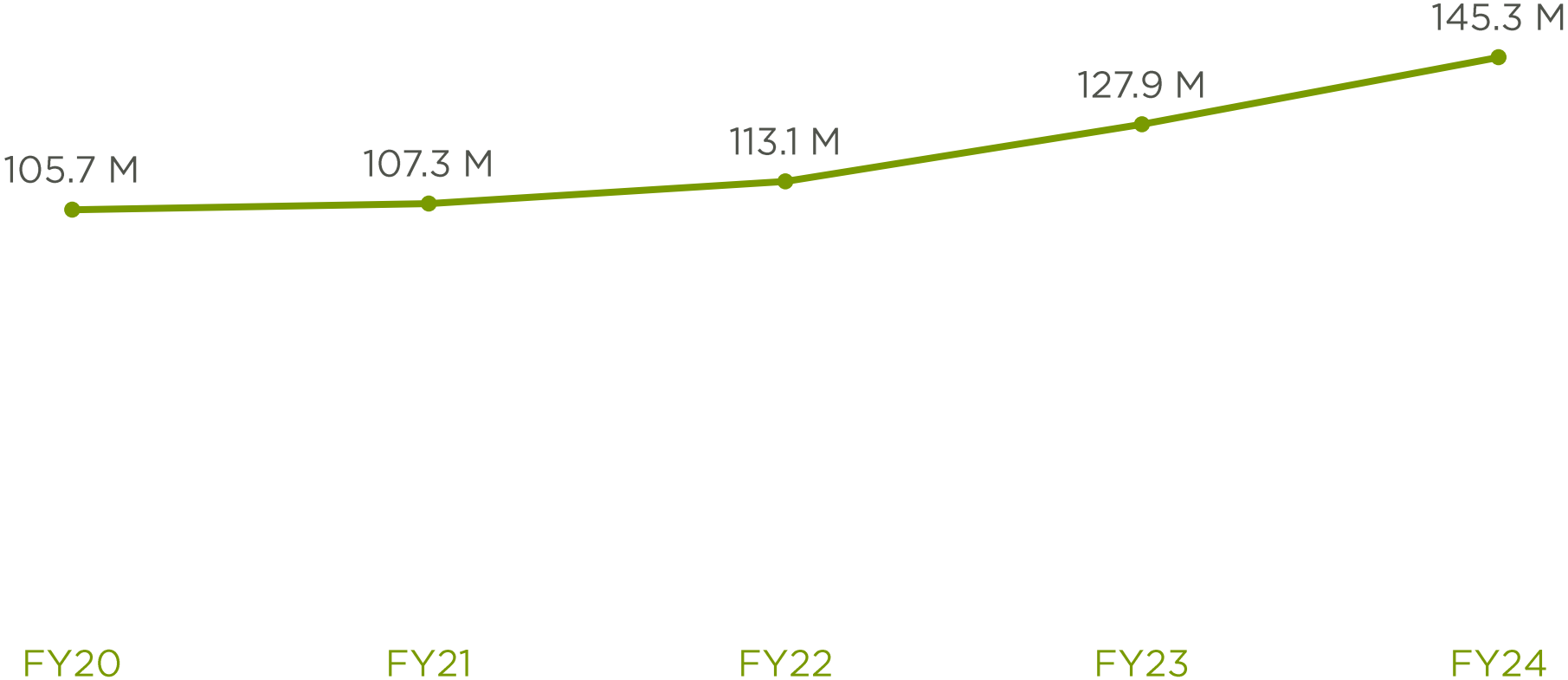


Total Funding from
Federal/State/Local Sources:
\$5,469,249*



MEALS PROVIDED

Total meals provided by Second Harvest Heartland from 2020-2024

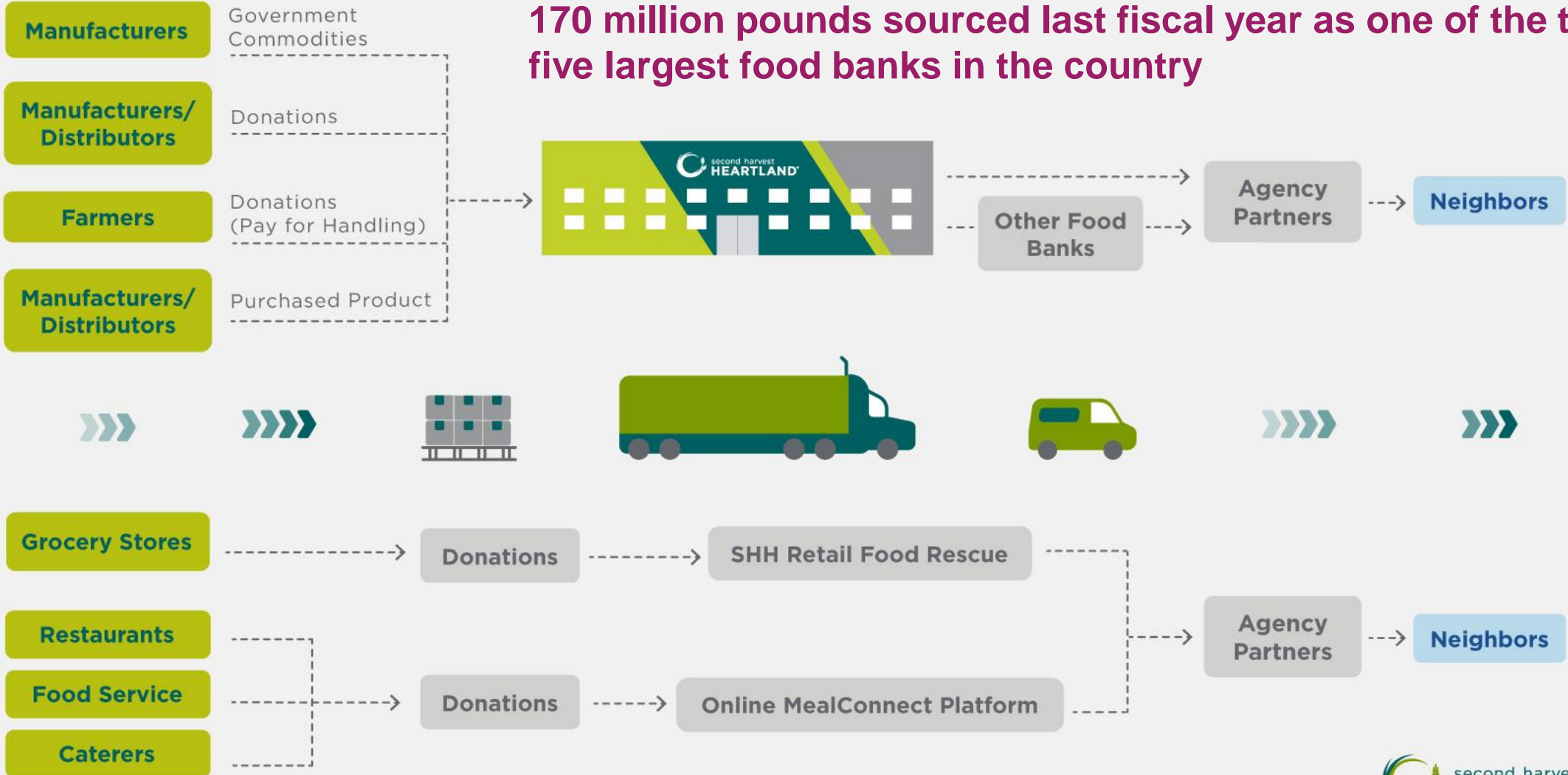


SECOND HARVEST HEARTLAND SUPPLY CHAIN

170 million pounds sourced last fiscal year as one of the top five largest food banks in the country

PRODUCERS (SUPPLY)

CUSTOMERS (DEMAND)



FARM TO FOOD SHELF PROGRAM

- Initially passed in 2015, funded through MN Department of Agriculture
- Compensates farmers for excess produce donated to food banks
- FY2024-25 appropriation: \$1.95m each year including \$850k for milk
- Current base funding: \$1.7m a year, including \$600k for milk

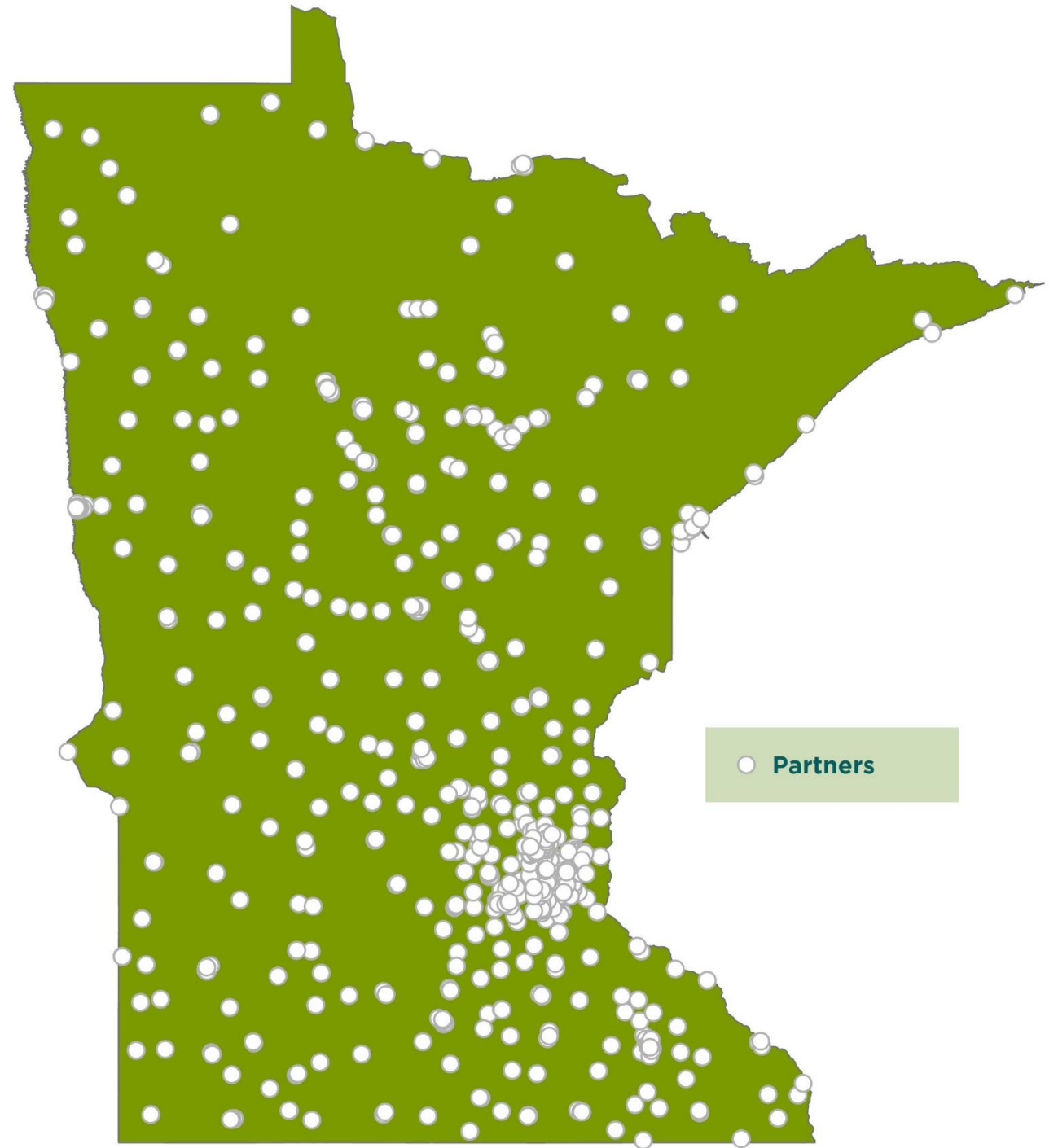
The Farm to Food Shelf Program is administered by Second Harvest Heartland on behalf of all Feeding America food banks serving Minnesota.



Map of Farm to Food Shelf Growers and Food Banks in Minnesota

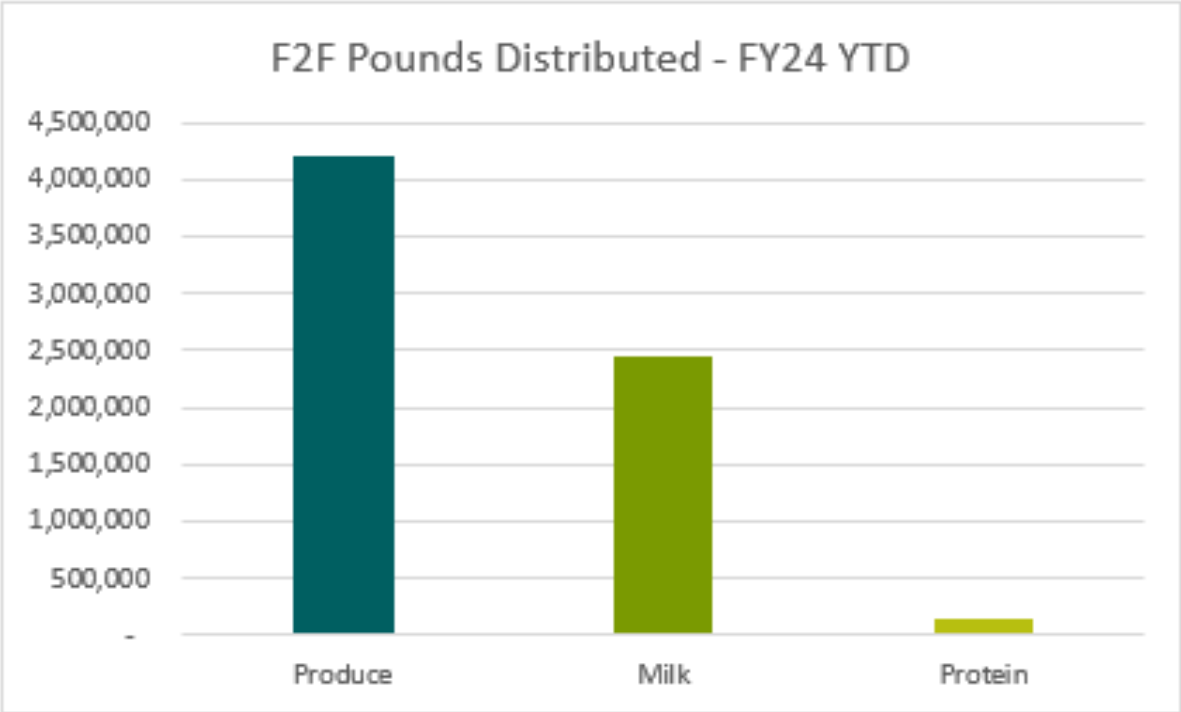


Map of partner food programs that received Farm to Food Shelf product



FARM TO FOOD SHELF SPENDING- FY2024

July 1 2023 – June 30 2024



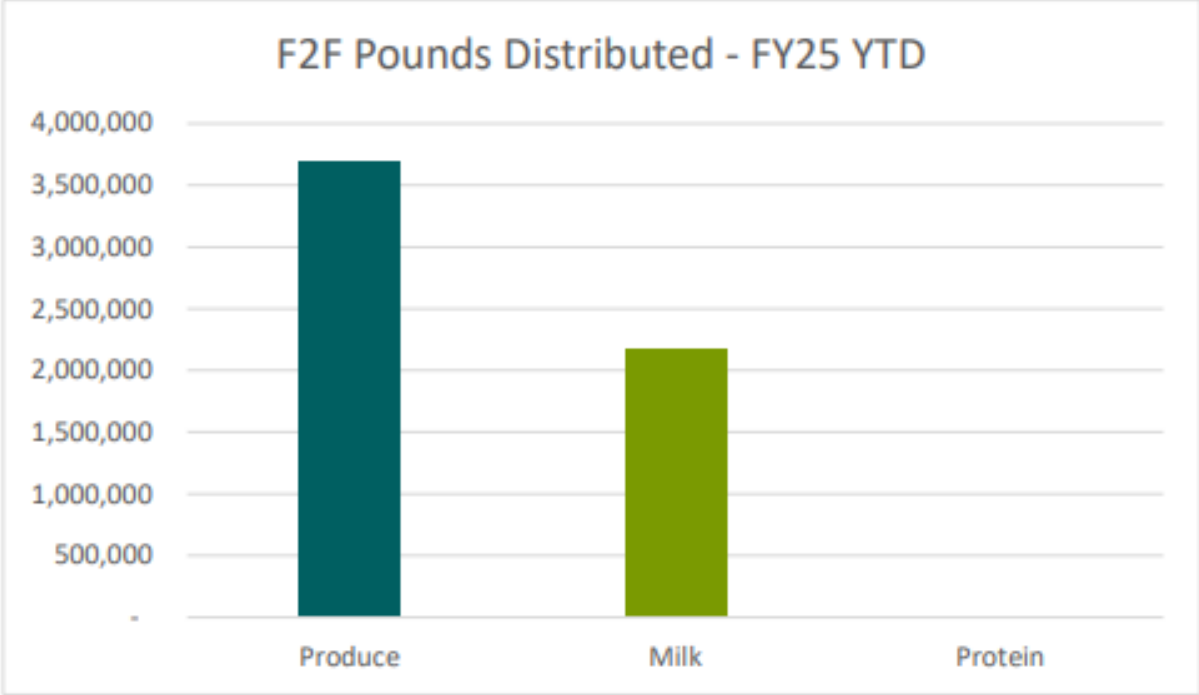
Key Notes:

- The entirety of the produce funds were spent by all six food banks in the first four months due to high demand for fresh produce.
- SHH was able to negotiate a lower milk price for FY24 with a new vendor, saving an average of \$0.12/lb from FY23 prices.
- Second Harvest Northland will spend their remaining milk money in FY25- it was underspent in FY24 as they completed their merger.
- Protein funds were underspent due to insufficient remaining funds to order another full truckload of protein. SHH plans to spend the remaining funds in FY25

	Pounds	Funds Spent	Remaining Funds	Total Budget	Prop. Of Total Budget
Produce	4,205,909	\$ 924,544	\$ -	\$ 924,544	100%
Milk	2,435,521	\$ 801,550	\$ 48,450	\$ 850,000	94%
Protein	155,760	\$ 169,742	\$ 3,214	\$ 172,956	98%

FARM TO FOOD SHELF SPENDING- FY2025

July 1 2024 - December 31 2024

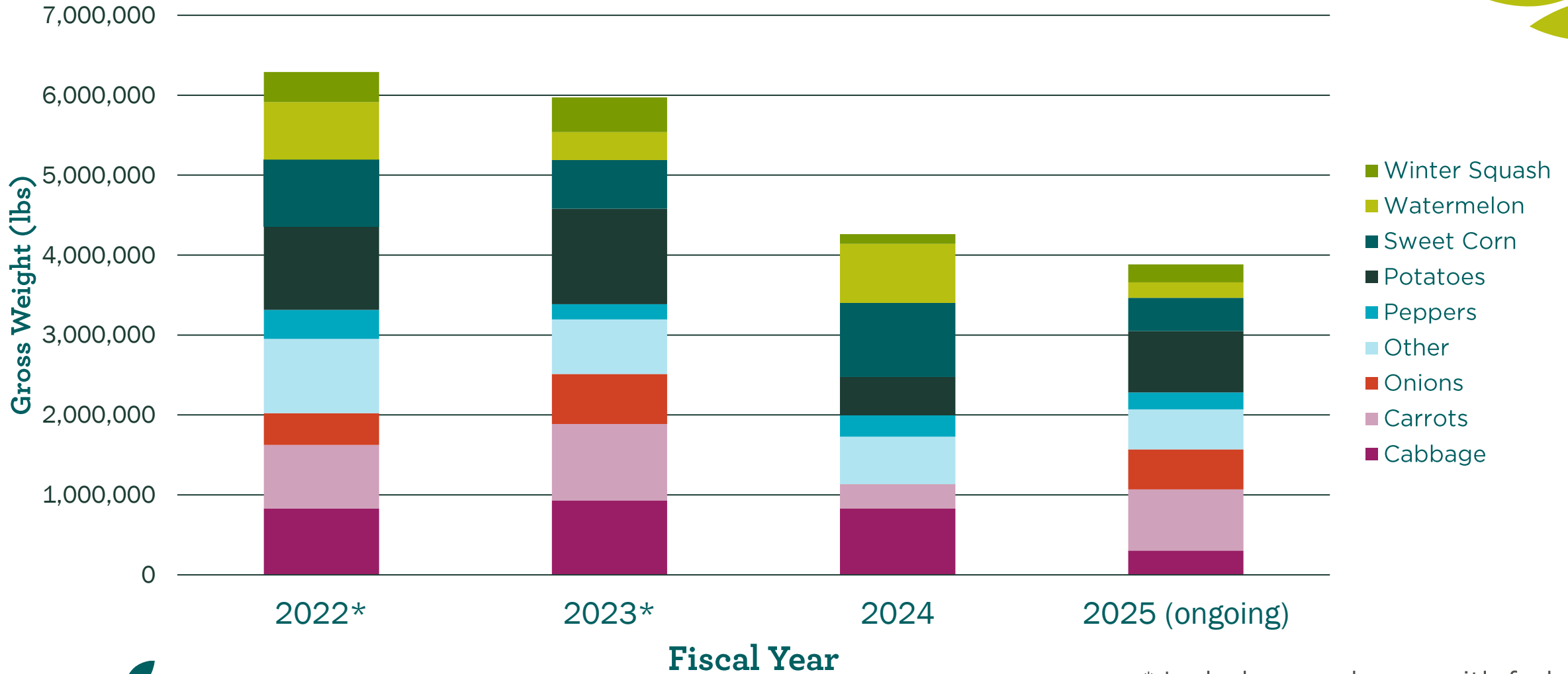


Key Notes:

- Produce funds have been spent more slowly this year compared to the past two years. This is due to a lack of supply from farmers with the rainy growing season and less incentive for farmers to donate produce as reimbursement rates haven't kept up with their costs.
- No protein funds were spent during Q1-Q2 as we wait for sufficient Minnesota-produced pork tenderloin to become available. Pork tenderloin is typically bought with these funds because its lower price allows us to extend the reach.
- At this point in the year, both Second Harvest Heartland and Channel One Food Banks have spent their entire portion of F2F milk funds.

	Pounds	Funds Spent	Remaining Funds	Total Budget	Prop. Of Total Budget
Produce	3,703,441	\$ 837,759	\$ 91,441	\$ 929,200	90%
Milk	2,186,725	\$ 747,373	\$ 151,077	\$ 898,450	83%
Protein	-	\$ -	\$ 168,300	\$ 168,300	0%

Farm to Food Shelf Produce Pounds by Variety



HISTORICAL MILK RATE PER POUND (SHH ONLY)



F2F funds only cover Second Harvest Heartland's milk cost for a small portion of the year. The food bank uses its own funds to purchase milk after the F2F funds run out. Therefore this chart represents the price across an entire 2.5 year time period, regardless of if F2F funds were used to purchase the milk.



Thank you!

