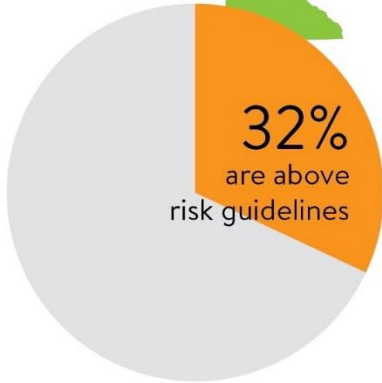


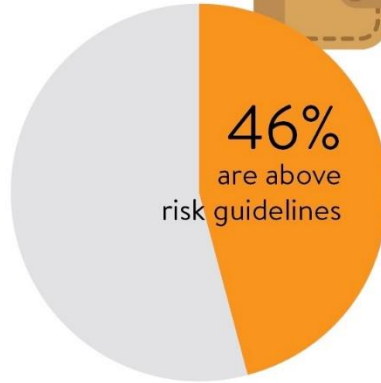
Air quality risk

These communities are more likely to be near higher levels of air pollution.

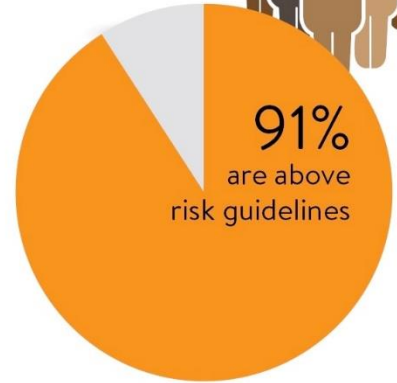
Statewide average



Low-income communities

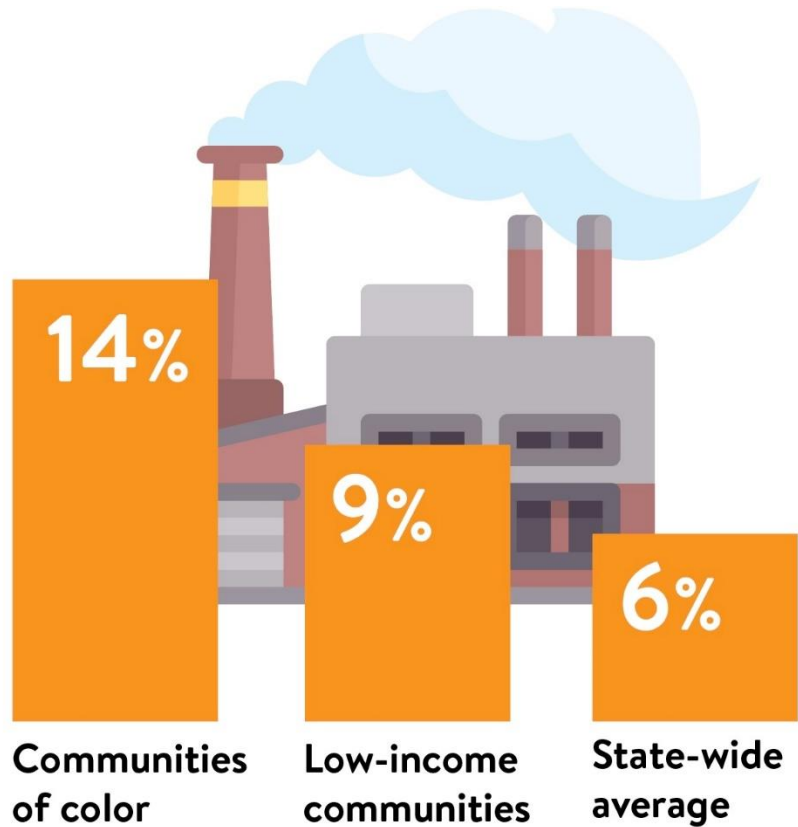


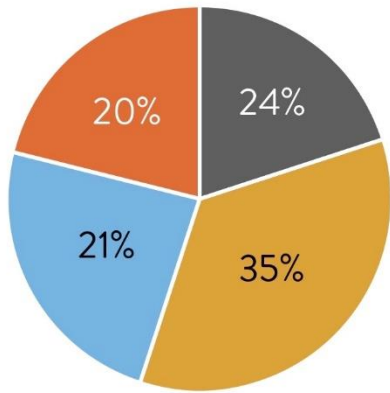
Communities of color and indigenous communities



Living near air pollution

Your chances of living near a facility that needs a permit to emit pollutants is higher if you are a person of color or poor in Minnesota.





- On-road vehicles 24%
Cars and trucks, etc.
- Off-road vehicles and equipment 20%
Construction, agriculture, and yard, etc.
- Neighborhood sources 35%
Dry cleaners, home heating, backyard fires, etc.
- Industrial facilities 21%
Factories, power plants, etc.

Small and widespread sources are the largest portion of overall air pollution emissions in Minnesota.

Includes PM2.5, SO2, NOX, VOCs.
Source: MPCA 2014 emissions inventory

Air pollution risks are unequal

All types of air pollution are likely higher near your community if you are a person of color, American Indian, or have lower rent.

