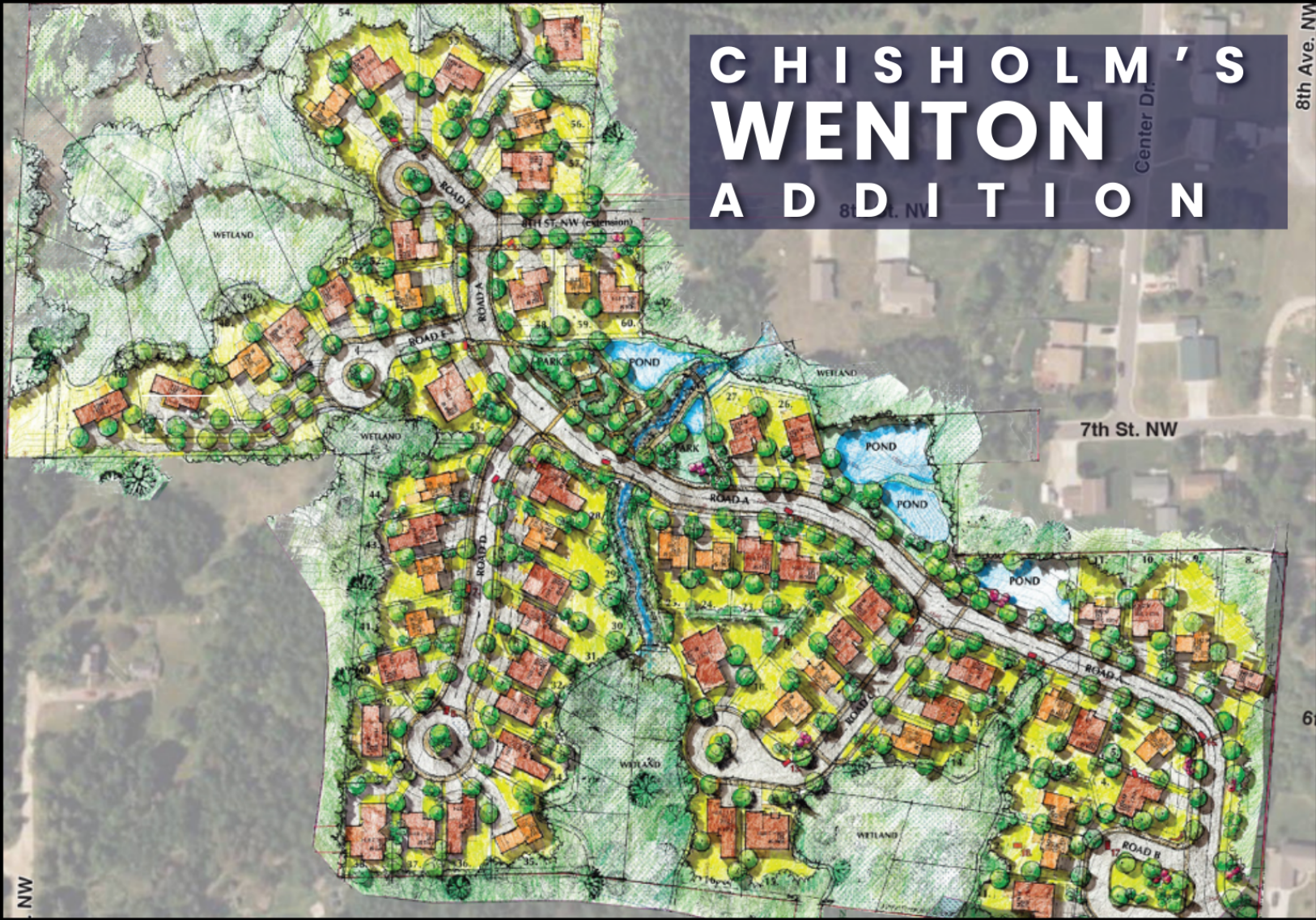


CHISHOLM'S WENTON ADDITION

Center Dr.

8th Ave. NW



ABOUT THE PROJECT

Wenton addition is a new market rate housing development in Chisholm, MN. The development was designed to have a natural feel with an abundance of trees and natural elements within the development.

The last major housing development in Chisholm was completed in the early 2000s, leaving a gap in available housing.

Wenton Addition will provide needed housing options that align with the community's vision for sustainable growth and economic vitality.

PROJECT DETAILS-PHASE 1



30 HOUSING LOTS

Chisholm's market study shows demand for new housing lots



\$2,500,000

INFRASTRUCTURE COSTS

\$300,000 request from state bonding



INCREASE POPULATION

Chisholm needs more housing options to continue to be a vibrant community