

The City of Keewatin, established in 1906, has a rich history as a small, close-knit community in Itasca County, Minnesota. Known for its strong sense of community and pride, Keewatin has always been a "Nice Place to Live." Today, we are undertaking a significant project to upgrade our critical infrastructure. **We are seeking \$5.5 million in state funds to address aging and deteriorated utility mains, pipes, and connections.**

LEGEND	
1.	HIBBING AVENUE (TACONITE AVENUE TO ALICE STREET)
2.	3RD STREET (HOWARD AVENUE TO ELIZABETH AVENUE)
3.	ELIZABETH AVENUE (DEAD END WEST OF 3RD STREET TO 1ST STREET)
4.	ELIZABETH AVENUE (ALICE STREET TO THOMAS STREET)
5.	ALICE STREET (ELIZABETH AVENUE TO NORTH ALLEY)
6.	THOMAS STREET (HOWARD AVENUE TO ALLEY NORTH OF ELIZABETH AVENUE)
7.	2ND STREET (ELIZABETH AVENUE TO 2ND AVENUE)
8.	1ST AVENUE (5TH STREET TO 3RD STREET)
9.	2ND AVENUE (1ST STREET TO EAST DEAD END)
10.	2ND STREET (3RD AVENUE TO 4TH AVENUE)
11.	BASEBALL FIELD ALLEY (BLAZE CREDIT UNION TO 4TH AVENUE)
12.	4TH AVENUE (1ST STREET TO ALLEY)

Keewatin has:

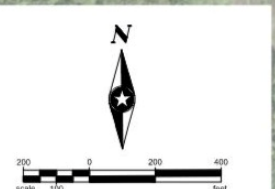
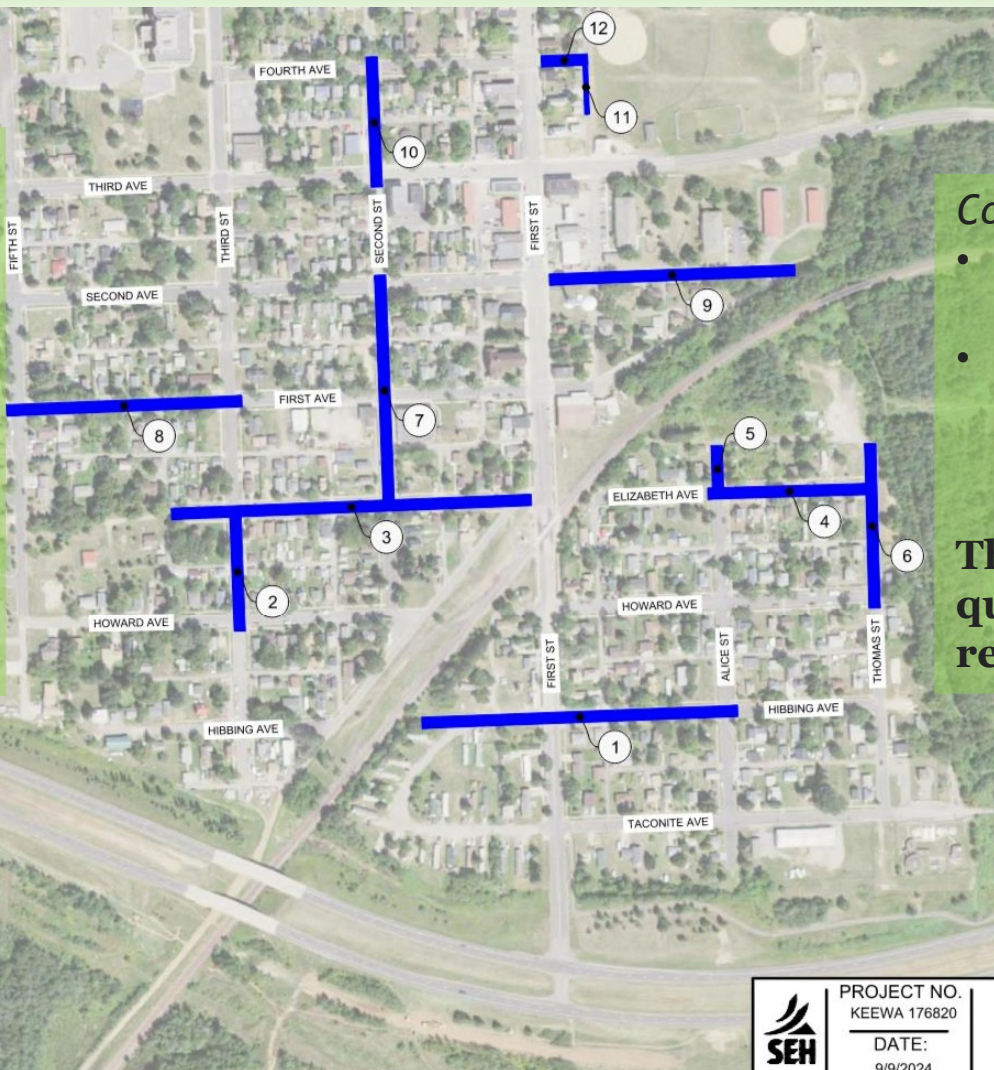
- A low median household income
- A high percentage of low to moderate-income residents

This makes it difficult to fund necessary improvements without outside assistance

Community Challenges:


- Inflow and infiltration issues
- Poor condition of utilities, streets, and sidewalks.

These issues impact the quality of life for our residents.







Keewatin at a Glance: Keewatin, with a population of 1,068 residents, is located in Itasca County, Minnesota. Established in 1906, Keewatin is known for its strong sense of community and pride. The city supports various community facilities, including parks, a library, and local businesses. U.S. Highway 169 serves as a main route, providing convenient access to neighboring communities.



The Project: The proposed project includes the full reconstruction of underground storm sewer, sanitary sewer, and water main utilities. This will necessitate the full reconstruction of subgrade, base, curb and gutter, ditching (where applicable), and resurfacing with bituminous pavement. Additionally, any deteriorated sidewalks will be reconstructed to meet current ADA standards. These improvements are essential to ensure the longevity and reliability of our infrastructure, supporting the well-being of our community.



Economic Landscape: Keewatin has a median household income of \$46,453, with 54% of residents falling into the low to moderate-income category. This economic disparity highlights the need for external funding to support infrastructure improvements. The project will have significant economic and community benefits, including improved appearance of the city, reduced maintenance costs, increased community pride, support for local businesses, and attraction of new investments.



Collaborative Efforts: Keewatin is working in partnership with neighboring communities on wastewater treatment and is expanding this collaboration to include additional partners. Additionally, we are in discussions with local industries to convey their domestic wastewater to our system. Maintaining our infrastructure is crucial to ensure the longevity of the wastewater treatment system and support our community's growth.