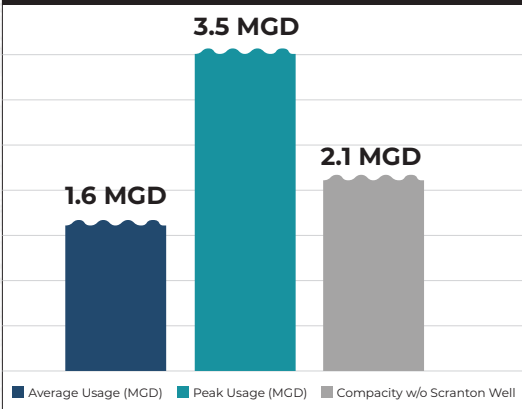


Capacity Limitations w/o Scranton Well



### Hibbing's Challenges

Hibbing's water system faces a **1.4 MGD deficit**.

#### Contributing Factors:

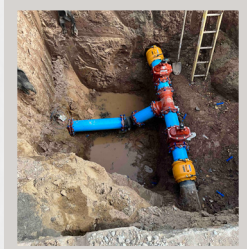
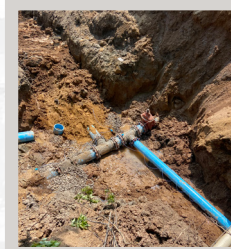
- Early retirement of Scranton well in support of mining
- Production limited by outdated facilities
- 50% of watermain are beyond expected service life
- 25 significant watermain breaks per year

To address this, HPU, its stake holders, and the residents we represent are acting boldly to **strengthen/increase water production and reduce system vulnerability**.

## A BOLD RESPONSE:

### Decreasing Vulnerability

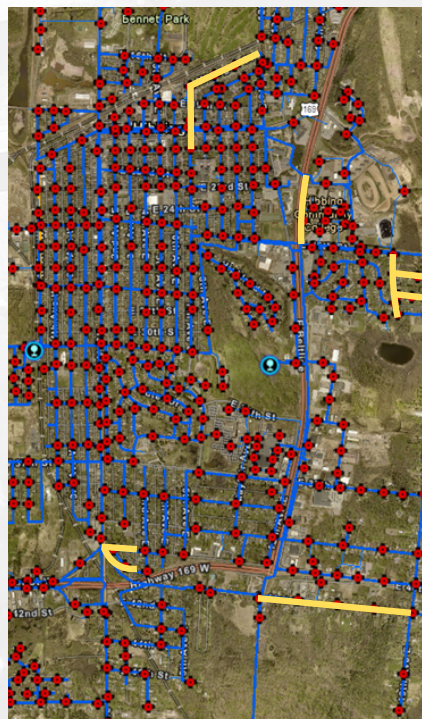
- 10-Year Watermain Capital Investment Plan
- Annually replacing 2% of system
- 7 successful projects over the last 2 years
- 17,000 feet of watermain replaced
- **11,500 feet planned for 2025 alone**



### Strengthening Existing Sources:



### Innovative Techniques: More Work for Less Cost



Bypass system installed for 100-year old reservoir



Backwash system replaced with new backwash water reclamation system



# Continuing Success

### Strengthen/Increase Production: Water Supply & Treatment Projects

#### Water Tower Repairs



#### Well/Well House Projects



#### New Water Supply and Treatment



#### South Water Treatment Plant (ongoing)



### Decrease System Vulnerability Distribution System Projects

Project Year	Location	Cost
2026	30" Supply Main (Townline Rd. to Wegner Rd.)	\$3.5 M
2026	7th Ave. E (23rd St. to Michigan St.)	\$3.6 M
2027	Kelly Lake (2nd Ave., 3rd Ave., 4th St., & 5th St.)	\$4.4 M
2028	E 25th St. (7th Ave. to Hwy 169)	\$1.5 M
2028	Opal Lane	\$0.9 M
2028	5th Ave. E (31st St. to 24th St.)	\$4.2 M
2029	Kelly Lake (1st St., 4th St., & Itasca Ave.)	\$2.4 M
2029	2nd Ave. W (34th St. to 39th St.)	\$4.2 M
2030	Ryan Addition (45th St. Subdivision)	\$7.2 M
2031	3rd Ave. E. (Howard St. to Industrial)	\$0.6 M
2031	19th Ave. E (26th St. to 41st St.)	\$5.8 M
2032	3rd Ave. W (27th St. to 39th St.)	\$7.4 M
2033	E 39th St. (5th Ave. to 19th Ave.)	\$6.4 M
2033	4th Ave W (24th St. to 38th St.)	\$2.7 M



# Need for Support

## Water System Needs Over Next 10 Years

Distribution System Projects	\$50.0M
Water Supply and Treatments Projects	\$37.0M
<b>Total</b>	<b>\$87M</b>

Hibbing Combined Monthly Water and Sewer Cost

