



Kasson Flood Relief Improvements

Challenge

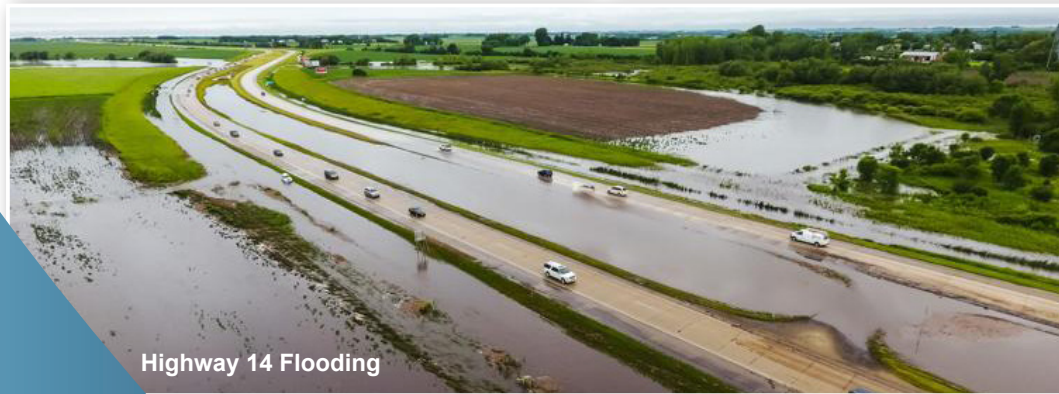
Flooding near and above the 100-year flood elevation has occurred in Kasson four times in the last 15 years (2007, 2010, twice in 2019). These heavy rainfall events resulted in damage to City infrastructure and private property, causing major economic impacts.



Highway 57 & Kasson Commercial District Flooding



Sanitary Sewer System Damage



Highway 14 Flooding

Latest Flooding - 2019 – State Disaster Declaration

- » 160 properties reported flooding/ sewer backups/water in basements
- » Highway 14, Highway 57 and County Road 34 closed due to flooding
- » City sanitary sewer infrastructure was damaged, causing backups in homes and discharge of raw sewage to Public Waters.

Citizens have demanded solutions!

RESIDENTS ANGRY ABOUT SEWER BACKUP IN KASSON FOLLOWING FLOODING

We continue following the devastation left by historic flooding in Dodge and Olmsted Counties. Kasson residents blame the city and its sewers for seeping their basements. Now - they want answers from the City.

Posted: Jul 11, 2019 12:40 AM
Updated: Jul 11, 2019 8:40 AM
Posted By: Isabella Basco

Kasson residents blame city for sewer backups, seek answers from mayor

July 8, 2019 11:09 pm Linda Ha

MINNESOTA NEWS, NEWS, TOP STORIES

KASSON, Minn. (KTTC) – While we had clear skies Monday, the past few weeks have been anything but. Heavy rain flooded homes in Kasson and caused sewer backups, forcing some residents to find temporary living spaces.

Soiled carpets and a host of appliances are scattered along 1st St. NE, a monument to the mess these residents are dealing with.

Still feeling like summer today; mild weather continues into the weekend

High temps in the lower 80s today A warm air mass remains planted in the region today, setting the stage for yet another comfortable, summer-like day.

City Actions Completed to Date

- » The City has implemented a program which requires homeowners to fix private deficiencies in the sanitary sewer system. This project is expected to cost the citizens an anticipated **\$500,000**.
- » The City of Kasson is completing additional smaller-scale flood control and sanitary sewer mitigation projects. The City has expended/plans to spend over **\$5 Million** on additional improvements.

Solution and Bonding Bill Request

- » Construct a stormwater impoundment upstream of Highway 14 to:
 - » Detain large rain events
 - » Lower the 100-year flood elevation approximately 2 feet throughout the City of Kasson
- » Replace City infrastructure in the hardest hit portions of the City:
 - » Improve resistance to flooding
 - » Reduce sanitary sewer backups in homes
- » The City of Kasson respectfully requests consideration of bonding bill assistance in the amount of **\$4.5 Million**.

Benefits

- Reduce flooding for Kasson and downstream areas that have experienced flooding (Dodge County+Mantorville+Oxbow Park)
- » Less frequency of flooding to homes and business
 - » Decrease sanitary sewer backups and discharges to public waters
 - » Less closures to Trunk Highway 14 and 57 due to flooding
 - » Less disruption in City services
 - » Increase water quality

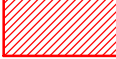


Project Costs

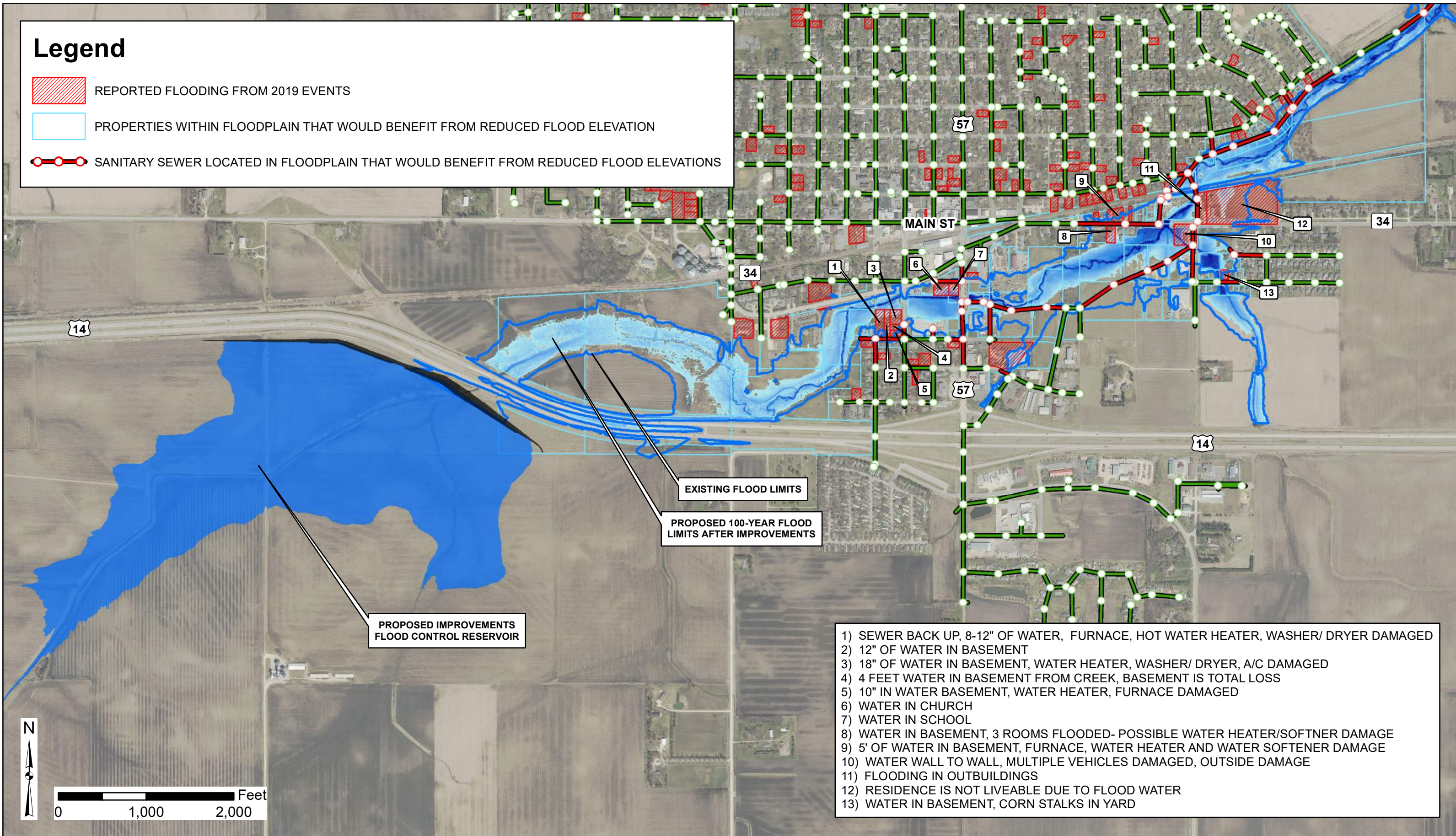
Construction	\$5.2M
Engineering, Legal, Admin	\$1.0M
Easements/Land Acquisition	\$2.8M
Total Project	\$9M

Proposed Funding Breakout

City	\$4.5M
Bonding Bill	\$4.5M
Total	\$9M

Legend

-  REPORTED FLOODING FROM 2019 EVENTS
-  PROPERTIES WITHIN FLOODPLAIN THAT WOULD BENEFIT FROM REDUCED FLOOD ELEVATION
-  SANITARY SEWER LOCATED IN FLOODPLAIN THAT WOULD BENEFIT FROM REDUCED FLOOD ELEVATIONS



- 1) SEWER BACK UP, 8-12" OF WATER, FURNACE, HOT WATER HEATER, WASHER/ DRYER DAMAGED
- 2) 12" OF WATER IN BASEMENT
- 3) 18" OF WATER IN BASEMENT, WATER HEATER, WASHER/ DRYER, A/C DAMAGED
- 4) 4 FEET WATER IN BASEMENT FROM CREEK, BASEMENT IS TOTAL LOSS
- 5) 10" IN WATER BASEMENT, WATER HEATER, FURNACE DAMAGED
- 6) WATER IN CHURCH
- 7) WATER IN SCHOOL
- 8) WATER IN BASEMENT, 3 ROOMS FLOODED- POSSIBLE WATER HEATER/SOFTNER DAMAGE
- 9) 5' OF WATER IN BASEMENT, FURNACE, WATER HEATER AND WATER SOFTENER DAMAGE
- 10) WATER WALL TO WALL, MULTIPLE VEHICLES DAMAGED, OUTSIDE DAMAGE
- 11) FLOODING IN OUTBUILDINGS
- 12) RESIDENCE IS NOT LIVEABLE DUE TO FLOOD WATER
- 13) WATER IN BASEMENT, CORN STALKS IN YARD



Masten Creek Flood Control

