

# City of Stillwater, MN

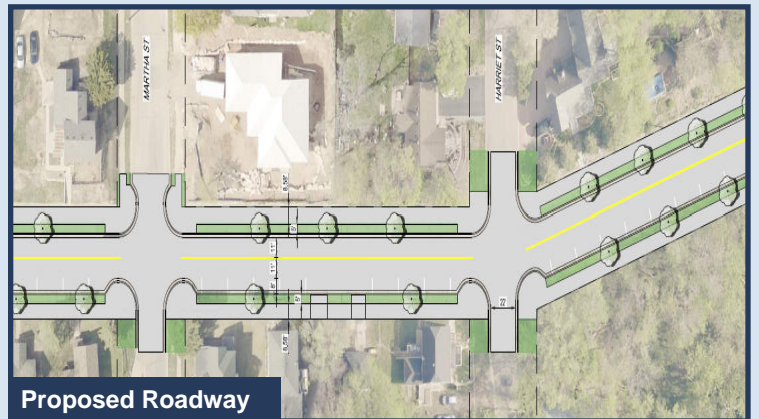
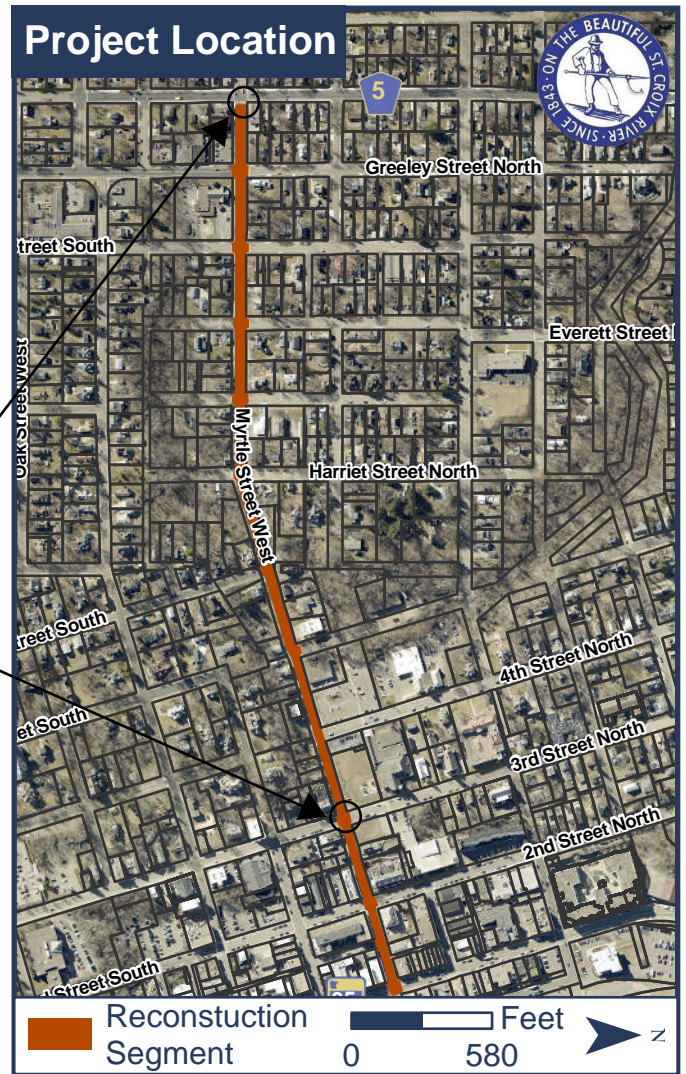
## MYRTLE STREET RECONSTRUCTION

### Project Goals:

- 1 Increase pedestrian & bicycle accessibility
- 2 Reduce carbon emissions
- 3 Develop urban forestry
- 4 Reduce impervious surface
- 5 Improve intersection safety (Greeley & Third)
- 6 Improve road surfaces

### Proposed Improvements

- 1 Reconstruct Myrtle Street from Owens Street (CSAH 5) to Main Street (TH 95)
- 2 Replace existing sidewalks and improve crosswalks
- 3 Enhanced pedestrian facilities



**Total Cost**  
**\$4.4 Million**

**Requesting**  
**\$2.2 Million**



#### Transportation

Myrtle Street serves as the west entrance to downtown Stillwater and Lowell Park that connect the broader region along MN State Hwy 95, which runs north and south along the St. Croix River.



#### Bicycle Friendly

The City of Stillwater was awarded the 2021 Bronze Award from the League of American Bicyclists



### Myrtle Street Facts:

Total Length:	Average Daily Traffic:	Constructed In:	Met. Council Bus Route:	Reported Accidents:
1.48 mi	8,165	1965	294 Express	83 Over 10 Years

Some icons provided by Flaticon.com