



UNIVERSITY OF MINNESOTA OVERVIEW AND LEGISLATIVE REQUEST

FY2026-2027 Biennial

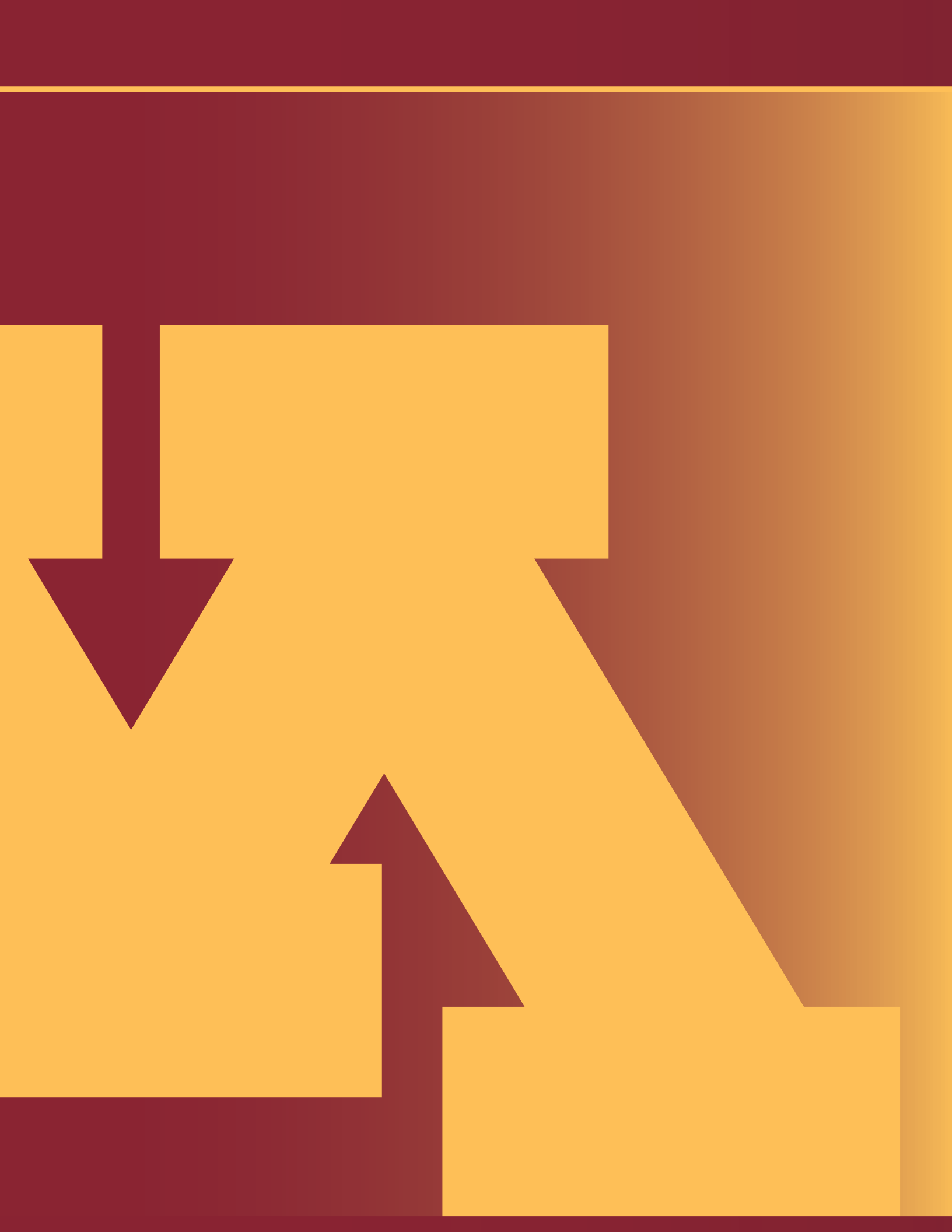


Table of Contents

Letter from the President	4
An Economic Engine for Minnesota	5
Ensuring Student Success	6
A Research Powerhouse	7
Serving the State, Nation and World	8
Welcoming All	9
A Responsible Steward of Resources	10
Revenue Source Timeline	11
Operations Requests	12
Health Requests	13
Research Requests	14
Student Requests	15
HEAPR Request	16
FAARM Request	18
Crookston Overview	21
Duluth Overview	22
Morris Overview	23
Rochester Overview	24
Twin Cities Overview	25
Achieving Excellence in 2025	26

LETTER FROM THE PRESIDENT

Dear legislators,

I have spent the better part of my presidency listening to and learning from people across our state, nation and world, and through these conversations, I am continuously reminded of what makes the University of Minnesota so exceptional.

We are one of the largest public research universities in the country, and yet our students, faculty and staff maintain a steadfast commitment to the success of people and communities across Minnesota. Our work is reflected in every county throughout the state, and we will remain focused on ensuring a bright, healthy and prosperous future for Minnesota for generations to come.

Our enrollment numbers continue to flourish, as we welcomed more than 10,000 new students to our University of Minnesota community this fall — two-thirds of whom hail from within the great state of Minnesota. As a University, we will continue to prioritize an accessible, world-class education for students across Minnesota and beyond.

The University's research enterprise also continues to thrive, with more than \$1 billion in total research expenditures across our five campuses. This allows our researchers to generate new knowledge and develop innovative technologies that address some of the greatest challenges plaguing our communities.

I am pleased to share some of the many ways in which our five-campus system is pushing the boundaries of research and discovery, transforming teaching and learning, and strengthening community outreach.



Sincerely,

A handwritten signature in black ink that reads "Cunningham".

Rebecca Cunningham
President



FIVE STRONG CAMPUSES. ONE STRONG STATE.

The University of Minnesota System is one of the most comprehensive in the nation, with offerings to meet the interests of every student and the changing needs of our society. We're proud of our land-grant mission of world-class education, groundbreaking research, and community-focused engagement, and we are unified in our commitment to elevate Minnesota and beyond.

An Economic Engine for Minnesota

There is so much to celebrate about the University of Minnesota's impact and importance to Minnesota and beyond.

The University of Minnesota:

- **Contributes \$11.5 billion a year** in economic activity to the State of Minnesota
- Supports more than **89,000 jobs across our state**



For every dollar the state provides to the University in our current \$686 million general appropriation, the University and its employees return \$676 million to Minnesota's tax base.

- That's almost a **1 to 1 return in real dollars**, which is **unparalleled** across higher ed.
- We as Minnesotans should not only be proud, we should feel very good about the **incredible return all of us experience** and benefit from when it comes to investing in the University of Minnesota.

Ensuring Student Success

Meeting all students where they are and maximizing their skills, potential, and well-being in a rapidly changing world.

Educating MN's students to be MN's workforce.

- Enrollment of MN resident students reached nearly 50,000 systemwide for Fall 2024 - the highest enrollment of MN students in more than 40 years.
- Systemwide, nearly 3 in 4 employed graduates work for a company or organization located in Minnesota.



Record systemwide enrollment.

- Systemwide, the University welcomed more than 70,000 students for the first time for the Fall 2024 semester. The Twin Cities campus saw its highest enrollment with nearly 57,000 students, including the largest freshman class since 1965.



Getting University of Minnesota students to their next steps, quickly.

- The Duluth campus saw its highest 4-year graduation rate ever recorded, while the Crookston and Rochester campuses saw their 2nd highest 4-year graduation rates. The Twin Cities campus recorded its highest 6-year graduation rate.
- More than 92% of graduated students systemwide are employed or are continuing their education.



We are a Research Powerhouse

Channeling curiosity, investing in discovery to cultivate possibility, and innovating solutions while elevating Minnesota and society as a whole.

A trusted partner in research innovation.

- **\$1.32 billion in research expenditures**, which is a 10% increase over the previous year, leading the UMN to rank #12 among U.S. public research universities.
- **\$628M in federal awards in FY2024**, nearly 60% of total sponsored research funding. The National Institutes of Health (NIH) and National Science Foundation (NSF) continue to be the largest federal sponsors of University research.



Cultivating curiosity through research.

- **Nearly 48% of Twin Cities undergraduate students** reported that they have participated in a faculty-led or individual research project.



A leader in technology commercialization.

- **Startups:** The University launched a record-setting 25 new startups.
- **The UMN is a top 20 U.S. public university for 5 key tech transfer metrics:** startups (3rd), deals (7th), disclosures (11th), new patent applications (16th), and license income (17th).
- 17th among U.S. public universities granted U.S. Utility Patents.



Serving the State, Nation and World

Inspired by Minnesota to improve people and places at world-class levels.



Sustainable campuses support a sustainable Minnesota.

- **Crookston (research) and Morris (water) achieved Top Performer status** in the 2024 Sustainable Campus Index.
- **The UMN system tied for 5th in the U.S. and is in the top 10% worldwide** in the Times Higher Ed (THE) Sustainable Development Goals Impact Rankings.
- **The UMN Climate-Smart Municipalities Program** received the first ever National Sustainability Society Achievement Award.

Improving and expanding access to healthcare for all Minnesotans.

- Overall **patient satisfaction scores exceeded 90%** for the first time.
- **NIH Blue Ridge ranks the UMN Medical School at #24 overall and #9 for public schools.**
- Accepting first students at **Twin Cities Medical School expansion location in St. Cloud**, with a focus on rural-based clinical care.

Enhancing Extension's reach.

- **Individual partnerships with Extension continue to rise**, up 25 percent in the past three years to 1,888.

Welcoming All

Fostering a welcoming community that values belonging and dignity in people and ideas.

Driving accessibility and inclusion forward.

The University continues to strive towards being an **equitable, diverse, inclusive, and accessible environment** for all University members.

Record BIPOC Student Population

Systemwide, the percentages of incoming freshmen, professional, and graduate students who identify as BIPOC reached record highs:

- **Freshman class:** 33.4%, more than one third of the class
- **Professionals and graduates:** 22.8%

Office for Digital Accessibility

The **Office for Digital Accessibility** was created to provide resources and services in support of ensuring electronic content and services are accessible for all.

Increasing students' sense of belonging.

The **percentage of students who have** a favorable sense of belonging on their campus reached a record high of 89.1%.



A Responsible Steward of Resources

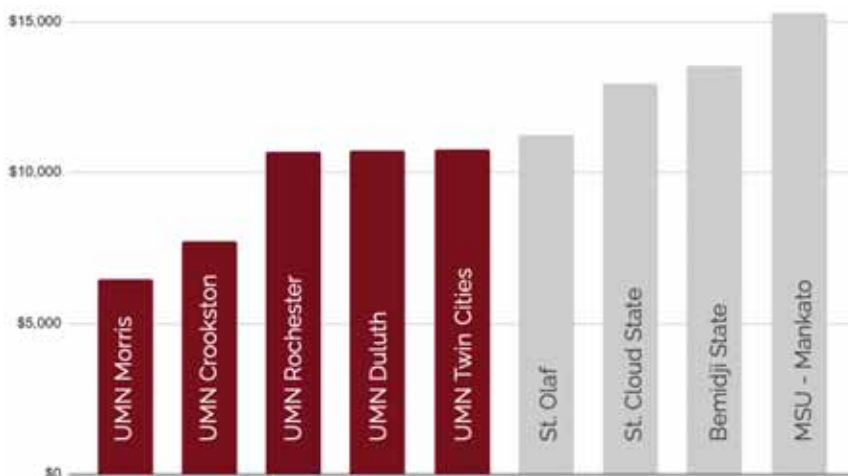
Stewarding resources to promote access, efficiency, trust, and collaboration.

Record student aid.

\$325.8M of institutional gift aid—which doesn't have to be repaid—provided to students systemwide in 2024, up nearly \$19 million over the previous year.



Offering the most affordable education in Minnesota.



- **UMN campuses have the lowest cost after gift aid** among MN 4-year institutions for families earning less than \$110,000.
- **53.1% of Twin Cities** students who graduated last year with a bachelor's degree had no outstanding state, federal, institutional, or private debt.

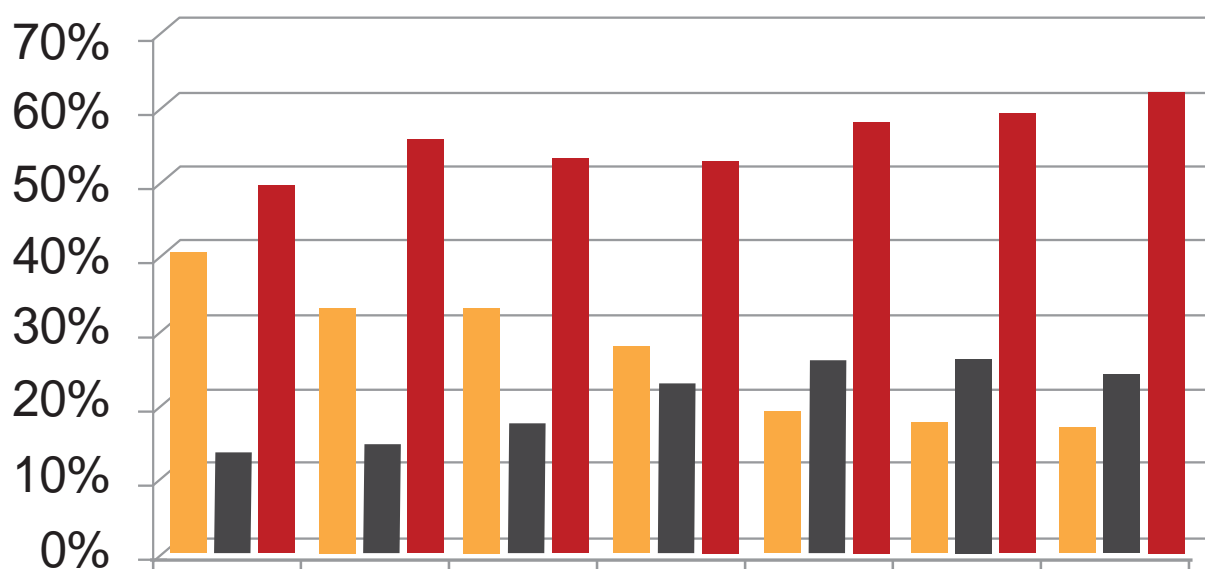
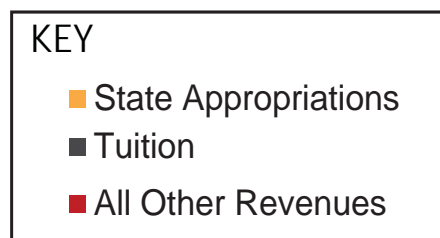
Historical conservation savings.

Forecasted to save **\$8M per year** by participating in energy conservation utility programs.

Directing funds to the University's mission.

\$43.2 million of low-cost financing funded capital improvement projects, including the Masonic Institute for the Developing Brain, the Institute for Child Development, and Murphy Hall Media Lab.

Striving to maintain excellence as critical revenue sources shift over time



<i>Budgeted</i>	1990	1996	2002	2008	2014	2020	2025
State Appropriations	39%	32%	32%	27%	18%	17%	16%
Tuition	12%	13%	16%	22%	25%	25%	23%
All Other Revenues	48%	55%	52%	52%	57%	58%	61%

Partner with the University of Minnesota to stretch limited resources and do more with less

FY26-27 BIENNIAL BUDGET REQUEST | \$120M

For more than a decade, and as a central part of its annual budget process, the University cuts 0.8%-2.5% of annual expenses funded by state appropriations and tuition, reallocating those funds to higher priority and high impact uses.

With State investment, the University will be bolder than ever to make the most of limited resources.

But without state support, increasing costs will drive higher tuition and limit our ability to attract and retain talented students, faculty and staff.

- **Over the last three years alone, the University of Minnesota experienced 7-10% annual inflation across utilities, leases, debt service, and other costs.** Covering these costs is critical to delivering the University mission Minnesotans have counted on for 170-plus years.
- **As Minnesota's fifth-largest employer, the University of Minnesota must address below-market-rate salaries to attract and retain the best talent** – people who directly benefit our students and local economies.
- **Evolving needs on our five campuses and other work sites across the state means investing in information security, safety, and compliance** with all federal and state laws is critical.

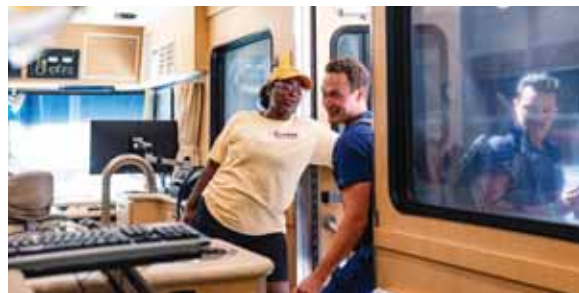


Overcome a growing healthcare crisis in rural, Tribal, and other underserved communities

FY26–27 BIENNIAL BUDGET REQUEST | \$45M

Minnesota’s health needs are changing rapidly, shaped by an aging population, strained health systems, and widening gaps in access to vital services. The University of Minnesota – one of the nation’s most comprehensive in human and animal health and the state’s only public university health system – is poised to address needs outlined in the Governor’s Task Force on Academic Health at the University of Minnesota.

Expand access to care and reduce staffing shortages — increasing the state’s workforce by nearly 3,000 health professionals over the next decade. This includes nurses, doctors, public health practitioners, patient care specialists and research coordinators, pharmacists, oral health professionals, veterinarians, among others.



Train more students in rural, Tribal, and other under served communities to best serve those populations across the state.



Triple the number of mobile health and telehealth services statewide by working with local providers, serving up to 6,000 more patients a year.



Expand connections with local care providers and support the rapid translation of health research into patient care so Minnesotans can live happier and healthier lives.



Drive Minnesota's economy, funding vital investment while addressing society's greatest challenges

FY26-27 BIENNIAL BUDGET REQUEST | \$40M

The University of Minnesota is one of the nation's leading research universities and is focused on service to Minnesota. State investment will support four areas that combine Minnesota's industry leaders with University of Minnesota research strengths, and will help attract new federal and private dollars.

Biomanufacturing will catalyze research and create intellectual property through a statewide hub located on our Twin Cities campus in St. Paul. By partnering with industry across Minnesota on research and workforce development, we will create/retain a homegrown talent pool, and grow high-quality jobs.



Precision agriculture promises to make our agricultural industry highly productive while protecting the environment. We will invest in work at our rural Research and Outreach Centers and in St. Paul, and advance the Future of Advanced Agricultural Research or FAARM.



Green energy and green iron investments will help Iron Range industries evolve and expand for future generations in sustainable ways. The University of Minnesota and its Natural Resources Research Institute (NRRI) in Duluth will create new partnerships with federal agencies and laboratories, industry, and local communities to attract investors and position Minnesota for the future.



Hypersonics will spur aerospace and national security industries in our state – home to the University of Minnesota's world-leading research capabilities. The University of Minnesota will help Minnesota-based companies grow and compete in the growing marketplace, and expand the state's aerospace and hypersonics talent base.



Invest in Minnesota's future leaders and workforce – 70,000+ University of Minnesota students throughout the state

FY26–27 BIENNIAL BUDGET REQUEST | \$30M

1 in 4 University of Minnesota students worry they will run out of food or already have. Almost 30% worry about their ability to pay for housing. Among 18-25-year-olds nationally, 34% have reported a mental illness in the past year. These issues have profound impacts on students' academic performance, graduation rates, and interpersonal relationships.

Increase mental health access by adding case managers, embedded counselors, psychology and psychiatry providers; substance abuse programs and services to support students in recovery; and expanded care for students through partnerships.



Create active learning environments to deliver cutting-edge education for students — 83% of undergraduate courses were fully in-person in Fall 2024.



Expand Career preparation and placement through increased internship opportunities, a unified hiring platform for employers, and more career specialists to assist student-veterans, first-generation students, and students with disabilities.



Strengthen solutions to food and housing insecurity, including expanded access to fresh and culturally-based food offerings, emergency funds for housing and transportation needs, and helping students determine eligibility for state and federal support programs.



Protect and extend the life of Minnesota's investments in safe and modern facilities

FY26 CAPITAL REQUEST | \$220M

Buildings and infrastructure on University of Minnesota campuses need continuous care. Elected officials passed the Higher Education Asset Preservation & Replacement (HEAPR) law in 1994, recognizing that public assets require ongoing upkeep and reinvestment. We must invest in the research, learning and student-focused spaces that support the needs of our state well into the future.

A historic lack of state investment has left nearly one-third of the University's roughly 32 million square feet of facilities statewide in poor or critical condition.

Higher Education Asset Preservation and Replacement (\$200M) will fund more than 100 projects in at least 75 buildings across Minnesota. With a \$6 billion backlog, \$200 million a year would be required just to keep the backlog from growing. In research spaces, the lack of investment costs Minnesota dearly in federal reimbursements – between \$80 and \$90 million a year when compared to peers who have invested. HEAPR projects include:

Crookston: Heating plant and campus infrastructure

Duluth: Library Annex HVAC and code renewal

Morris: Multi-Ethnic Resource Center code & life safety

Twin Cities:

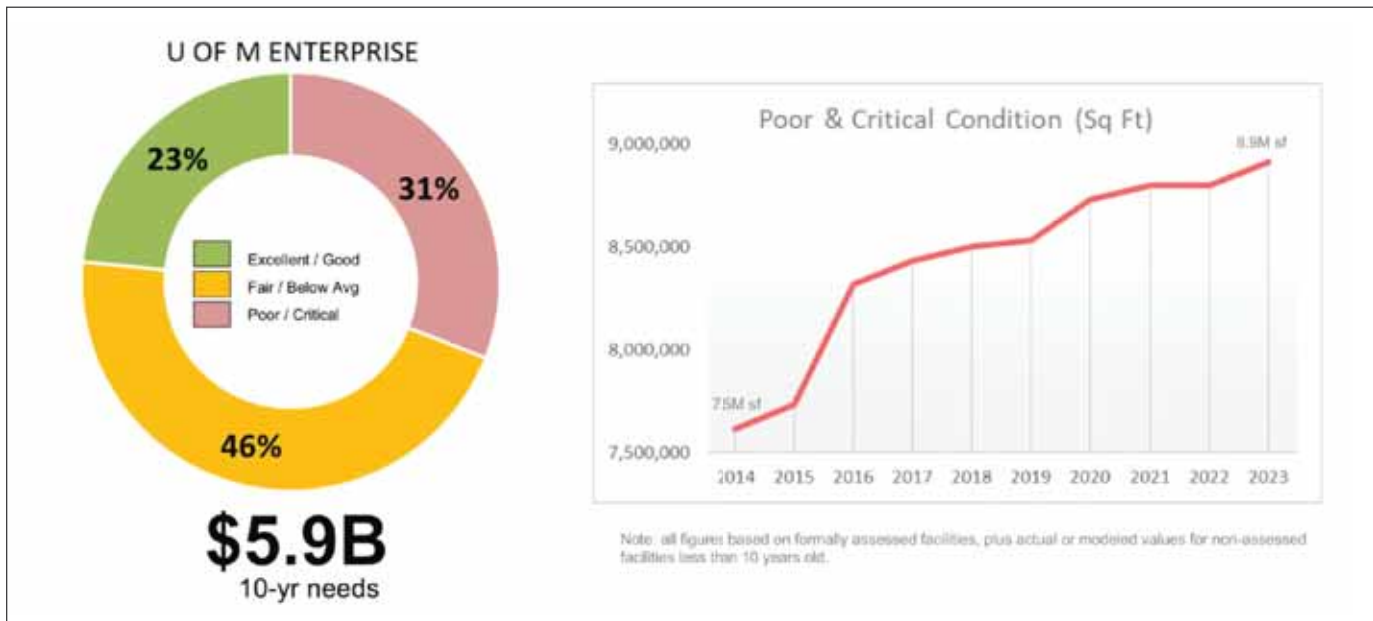
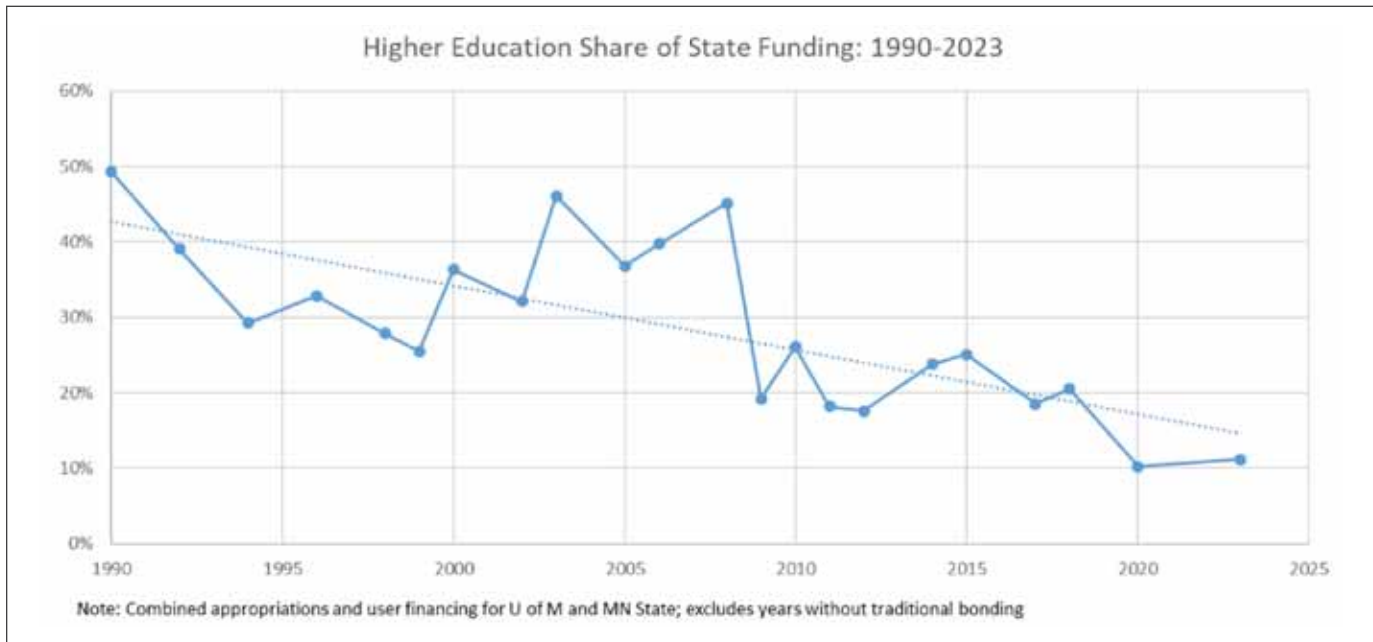
- Food Science & Nutrition in St. Paul
- Washington Avenue Bridge safety in Minneapolis

Future of Advanced Agricultural Research in Minnesota (FAARM) (\$20M), which will continue pre-design, design, pre-construction and preliminary site preparation for the public-private partnership in Mower County.



Less state investment in University of Minnesota facilities leaves more and more buildings in significant disrepair.

In 1990, higher education capital was roughly 50% of the state's bonding bills. In recent history, when bonding bills have passed, an average of only 10% was allocated for higher education — split between the University of Minnesota and Minnesota State.



Ignite Minnesota's food and agricultural economy

FY26-27 CAPITAL REQUEST | \$20M

The challenge—feed a growing population while preserving and protecting our planet.

FAARM (The Future of Advanced Agricultural Research in Minnesota) leverages the strengths of the University of Minnesota to create a state-of-the-art, first-of-its-kind teaching, research and outreach hub to support Minnesota farmers and strengthen Minnesota's global leadership in food and agriculture innovation.

Research and discovery to drive Minnesota forward.

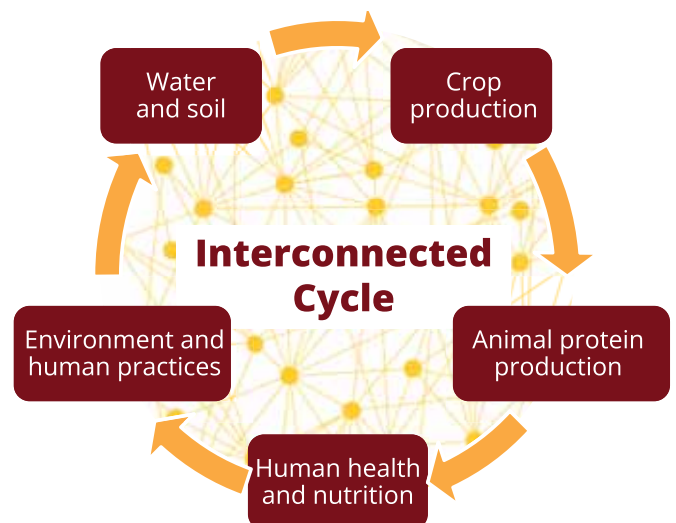
Leveraging the strengths of the University of Minnesota

Located in Mower County, FAARM is a public-private partnership that provides a world farm setting that will combine agriculture, engineering, robotics, and biological and information technologies in a sustainable context.

FAARM will study and advance health intersections between animals, plants, humans and the environment.

The project seeks to:

- Improve profitability for Minnesota farmers
- Grow rural Minnesota economies
- Eliminate the food versus environment trade-off by approaching net-positive impact on our soil, water, and air



FAARM's space and infrastructure will become a catalyst for interdisciplinary excellence, creating opportunities for the University of Minnesota and other experts across agriculture, food, and natural resources, among other disciplines, to work side-by-side on collaborative research with common goals.

Driving Minnesota's food and agriculture economy

FAARM expands on the Minnesota agriculture industry's \$112 billion annual economic impact to:

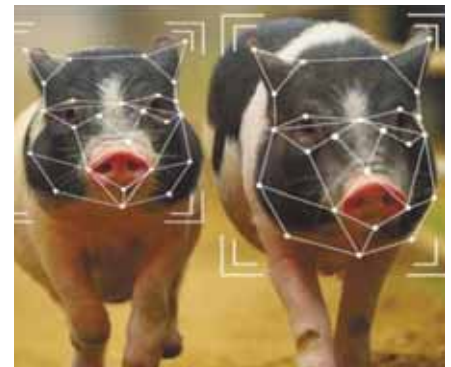
- Develop a strong next generation of workforce talent
- Improve farm profitability and sustainability
- Lead a culture of innovation and adoption of new technologies
- Provide long-term research investments
- Validate environmental outcomes for business
- Attract new businesses to Minnesota and ignite a start-up ecosystem
- Be a catalyst for public-private partnerships
- Build the bioeconomy with renewable resources



Forward-looking teaching and education

FAARM partners with Minnesota State's Riverland Community College in Austin to:

- Teach students modern approaches to agriculture and solidify a long-term talent pipeline of savvy food and agriculture professionals for the state
- Provide a range of educational offerings for learners of all ages to nurture interest and build knowledge in agriculture



Leveraging the strength of the University of Minnesota System

The University of Minnesota has been integral to Minnesota's agricultural leadership for more than 170 years.

- Ranked #1 U.S. public university for interdisciplinary science
- Ecosystem of statewide Research and Outreach Centers and Extension offices; St. Paul labs, fields, and barns
- Intersections with Crookston, Duluth, Morris, and Rochester campuses

FAARM is for farmers

From farm to fork, **FAARM will deliver practical solutions for farmers today**, and future-focused ideas and education to keep them thriving tomorrow.

The University of Minnesota System, with campuses in Crookston, Duluth, Morris, Rochester, and the Twin Cities, is driven by a singular vision of excellence. We are proud of our land-grant mission of world-class education, groundbreaking research, and community-engaged outreach, and we are unified in our drive to serve Minnesota.

govrelations.umn.edu | @UMNGovRelations | govrelations@umn.edu

University of Minnesota Campuses

The University of Minnesota System has five distinct campuses—
Crookston, Duluth, Morris, Rochester, Minneapolis and St. Paul — serving
all regions of the state. Each campus has unique strengths, enriched by its
surrounding communities, and all are focused on meeting the needs of
students and the state. Discover the signature offerings of each of
our campuses at system.umn.edu/campuses.





CROOKSTON CAMPUS AT A GLANCE

The University of Minnesota Crookston is known for its focus on experiential learning, and the campus is also one of the nation's pioneers in online and distance education.

Student Enrollment (Fall 2024)

Undergraduate	1,729
Non-degree	883
Total Students	2,612

Degrees Awarded (2023-24)

Bachelor's	333
------------	-----

Numbers of Employees (Fall 2024)

Direct Academic Providers	115
Higher Ed Mission Support	57
Intercollegiate Athletics	30
Facilities Related Jobs	25
Organizational Support	59
Leadership	3
Total Employees:	289

Campus Physical Size (2024)

Number of Buildings	38
Assignable Square Feet	468,899

Total Expenditures (FY2024)

\$48 million





DULUTH CAMPUS AT A GLANCE

The University of Minnesota Duluth is a highly ranked medium-sized regional university with a strong emphasis on the environment and sustainability, and a global reputation for natural resources and freshwater research.

Student Enrollment (Fall 2024)

Undergraduate	7,336
Graduate	586
Professional	223
Non-Degree	1,108
Total Students	9,253

Degrees Awarded (2023-2024)

Bachelor's	1,781
Master's	234
Doctoral and Professional	2
Total Degrees	2,017

Numbers of Employees (Fall 2024)

Direct Academic Providers	623
Fellows, Trainees & Students in Academic Jobs	220
Higher Ed Mission Support	253
Intercollegiate Athletics	60
Facilities Related Jobs	153
Organizational Support	419
Leadership	16
Total Employees	1,744

Campus Physical Size (2024)

Number of Buildings	105
Assignable Square Feet	1,998,300

Total Expenditures (FY2024)

\$269 million





MORRIS CAMPUS AT A GLANCE

The University of Minnesota Morris is a public liberal arts college where students work closely with faculty and mentors to shape an education that prepares them for challenging graduate programs, productive careers, and deep civic engagement.

Student Enrollment (Fall 2024)

Undergraduate	936
Non-degree	45
Total Students	981

Degrees Awarded (2023-2024)

Bachelor's	189
------------	-----

Numbers of Employees (Fall 2024)

Direct Academic Providers	125
Fellows, Trainees & Students in Academic Jobs	1
Higher Ed Mission Support	65
Intercollegiate Athletics	22
Facilities Related Jobs	46
Organizational Support	86
Leadership	6
Total Employees	351

Campus Physical Size (2024)

Number of Buildings	37
Assignable Square Feet	601,040

Total Expenditures (FY2024)

\$51 million





ROCHESTER CAMPUS AT A GLANCE

The University of Minnesota Rochester prepares health sciences professionals and maintains unique collaborations with world-renowned medical organizations in the community.

Students Served (Fall 2024)

Undergraduate	568
Non-degree	10
Nursing partnership programs*	118
Graduate and Professional partnership programs*	244
Total Students Served	938

Degrees Awarded (2023-2024)

B.S. (Health Science)	123
B.S. (Health Professions)	31
Total Degrees Awarded	154

Partnership Degrees (2023-24)**

Nursing partnership programs	34
Graduate and professional partnership programs	59

Numbers of Employees (Fall 2024)

Direct Academic Providers	45
Fellows, Trainees & Students in Academic Jobs	4
Higher Ed Mission Support	33
Facilities Related Jobs	0
Organizational Support	19
Leadership	5
Total Employees	106

Campus Physical Size (2024)

Number of Buildings (leased)	6
Assignable Square Feet	269,083

Budget Expenditures (FY2024)

\$27 million



* Students not officially enrolled at UMN Rochester but who participate in a partnership program between UMN Rochester and another UMN campus. These students are included in official enrollment of other UMN campuses.

** Degrees are awarded by a degree-granting UMN institution through a partnership program. These degrees are included in official degrees awarded for other UMN campuses.



TWIN CITIES CAMPUS AT A GLANCE

The University of Minnesota Twin Cities is the flagship campus and one of five university campuses in the nation with schools of engineering, medicine, veterinary medicine, law, and agriculture all in one campus.

Student Enrollment (Fall 2024)

Undergraduate	31,855
Graduate	11,255
Professional	3,886
Non-degree	9,670
Total Students	56,666

Degrees Awarded (2023-2024)

Bachelor's	7,215
Master's	2,721
Doctoral & Professional	1,779
Total Degrees	11,715

Numbers of Employees (Fall 2024)

Direct Academic Providers	7,421
Fellows, Trainees and Students in Academic Jobs	6,135
Higher Ed Mission Support	4,318
Intercollegiate Athletics	202
Facilities Related Jobs	1,198
Organizational Support	6,151
Leadership	215
Total Employees	25,640

Campus Physical Size (2024)

Minneapolis	No. of Buildings	195
	Assignable Sq Ft	12,452,397
Saint Paul	No. of Buildings	158
	Assignable Sq Ft	2,595,972

Total Expenditures (FY2024)

\$4.3 billion



Achieving Excellence in 2025



Educating Minnesota Students to be Minnesota's Workforce

- Enrollment of students from Minnesota reached nearly 50,000 systemwide for fall 2024—the highest enrollment of Minnesota students in more than 40 years.
- Systemwide, nearly 3 in 4 employed graduates work for a company or organization located in Minnesota.

3 in 4



Getting Students to Their Next Step Quickly

The Duluth campus saw its highest four-year graduation rate ever recorded, while the Crookston and Rochester campuses saw their second highest four-year graduation rates. The Twin Cities campus recorded its highest six-year graduation rate.



Record Student Aid

The University of Minnesota provided \$325.8 million of institutional aid—which doesn't have to be repaid—to students systemwide in 2024, up nearly \$19 million over 2023.



Record BIPOC Student Population

Systemwide, the percentages of incoming first-year, graduate, and professional students who identify as BIPOC reached record highs:

- Freshman class: 33.4%
- Professionals and graduates: 22.8%



Top 25

In the 2025 *U.S. News and World Report* Best Colleges rankings, the University of Minnesota Twin Cities maintained its overall ranking of No. 23 for Top Public National Universities for the third year in a row. And the Twin Cities campus moved up to 54th overall among all national universities.

In the same rankings, the Crookston campus was ranked No. 3 in Top Public Schools – Regional Colleges (Midwest); the Duluth campus moved up to No. 20 in Regional Universities (Midwest); and the Morris campus advanced to No. 7 in Top Public Schools – National Liberal Arts Colleges.



Record Systemwide Enrollment

Total enrollment for the University of Minnesota's five campuses surpassed 70,000 students in the fall of 2024 for the first time ever—about 1,700 students more than the previous year.

The Twin Cities campus saw its highest enrollment with nearly 57,000 students, including the largest freshman class since 1965.



Research Impact

- The University of Minnesota earned \$1.06 billion in external research award funding this past year—the fourth year in a row the University topped \$1 billion in research funding.
 - Nearly 48% of Twin Cities undergraduate students reported that they have participated in a faculty-led or individual research project.
-



Catalyzing Innovation

Startups: The University launched a record 25 new startup companies in fiscal year 2024, surpassing its previous record for the fourth year in a row.

- Since 2006 we have launched more than 260 startup companies based on University of Minnesota technology.
 - 73 percent of our startups are based in Minnesota
 - 68+ percent are still active (or acquired), well above the national average
-



Sustainable Campuses for a Sustainable Minnesota

- Our Crookston campus (research) and Morris campus (water) achieved Top Performer status in the 2024 Sustainable Campus Index.
 - The University of Minnesota System tied for 5th in the U.S. and is in the top 10% worldwide in the Times Higher Ed (THE) Impact Rankings.
-



Sense of Belonging

- 89%: Twin Cities undergraduate students who agree they have a sense of belonging on campus.
-



Enhancing Extension's Reach

Individual partnerships with University of Minnesota Extension continue to rise, up 25% in the past three years to 1,888.



UNIVERSITY OF MINNESOTA

Driven to Discover®

Crookston Duluth Morris Rochester Twin Cities