

Merriam Junction Regional Trail Louisville Segment



STATE BOND REQUEST:
\$7,267,000

To design and construct 4.3 miles of multi-use trail, including elevated boardwalks over wetland and lake areas, to close the existing gap in the Regional Bicycle Trail Network in northern Scott County.

PROJECT BUDGET

Property Acquisition	\$ 1.00 M
Design Fees	\$ 2.02 M
Construction	\$ 9.00 M
Inflationary Adjustment	\$ 2.51 M
TOTAL	\$14.53 M



129,000 - 250,000

ANTICIPATED ANNUAL TRAIL USERS

PROJECT TIMELINE

- 2021-2023**
Community Engagement & Trail Plan
- JULY 2024 - SEPTEMBER 2025**
Preliminary Design/Environmental
- OCTOBER 2025 - AUGUST 2026**
Final Design & ROW Acquisition
- FALL 2026**
Bidding and Award
- 2027-2028**
Construction

Provides nonmotorized regional connectivity and improves recreation opportunities for the 10 million annual visitors from the upper midwest to the Minnesota River valley.



ACCESSIBILITY & CONNECTIVITY

- Finishes a 20 mile loop connecting residents to goods, services, jobs, entertainment venues, and other amenities in both Scott and Carver Counties and the Shakopee Mdewakanton Sioux Community
- Relatively flat grades create an opportunity for trail visitors of all abilities to use the trail



HISTORICALLY UNDERSERVED NEIGHBORHOODS

Connections to local communities consisting of:

- 13% BIPOC residents
- 8% Hispanic or Latinx residents
- 15% of residents live below the federal poverty level
- 21% of residents are over the age of 65



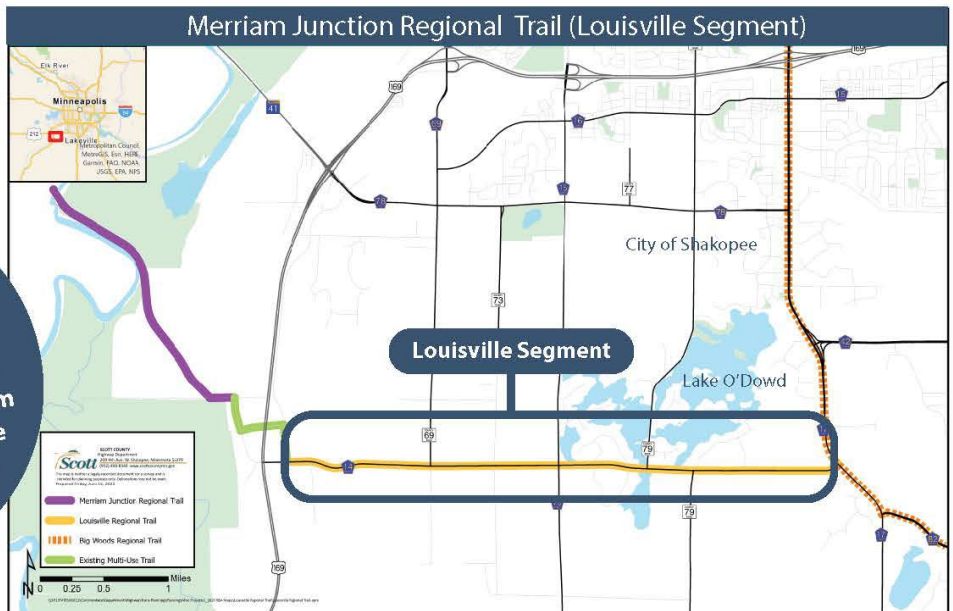
RECREATION & TRANSPORTATION

- Trail connection provides both recreation and transportation opportunities for local, regional, and state residents
- Completing a gap in the Regional Bicycle Trail Network creates significant travel time savings
- Connecting popular regional destinations for area residents and visitors alike



SAFETY

- Currently, CR 14 has narrow shoulders that do not facilitate safe bike and pedestrian usage.
- The trail would significantly reduce conflicts between cyclists, pedestrians, and vehicles by providing an off-road connection

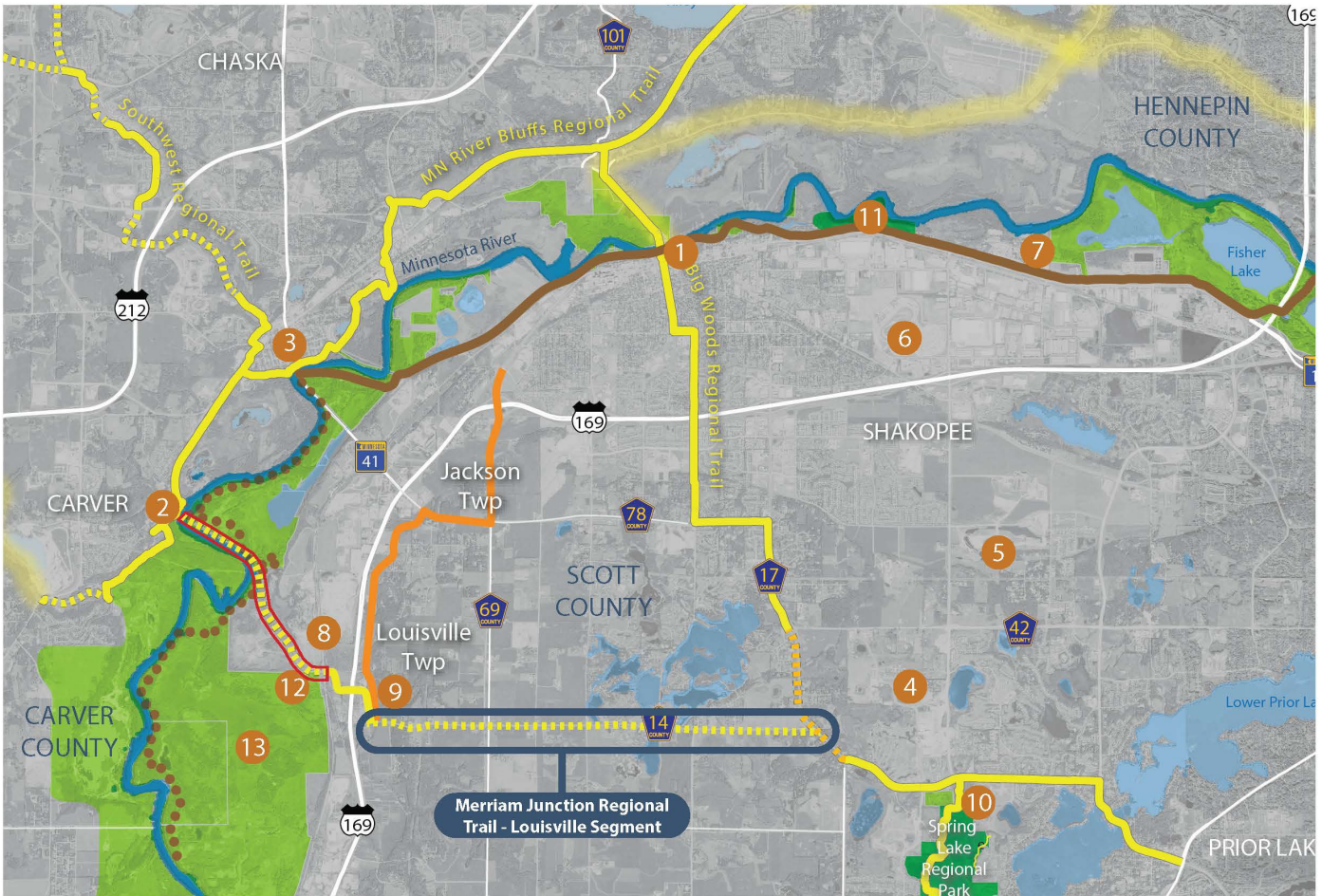


Project Contacts:

Patty Freeman
pfreeman@co.scott.mn.us
(952) 496-8752

Lisa Freese
lfreese@co.scott.mn.us
(952) 496-8363

Regional Context



Regional Destinations

- | | |
|-------------------------------|--|
| 1 Downtown Shakopee | 8 Renaissance Festival |
| 2 Downtown Carver | 9 Sever's Corn Maze |
| 3 Downtown Chaska | 10 Spring Lake Regional Park |
| 4 Mystic Lake Casino | 11 The Landing Regional Park |
| 5 Hočokata Ti Cultural Center | 12 Louisville Swamp Trailhead |
| 6 Canterbury Park | 13 Minnesota Valley National Wildlife Refuge |
| 7 Valleyfair | |

Legend

- Regional trail
- Planned Regional Trail
- 2024-2025 construction
- 2027 programmed regional trail
- On-road connection
- State trail - paved
- State trail - unpaved
- Regional Park
- State & Federal land



Project Contacts:

Patty Freeman
 pfreeman@co.scott.mn.us
 (952) 496-8752

Lisa Freese
 lfreesee@co.scott.mn.us
 (952) 496-8363