



# 2025 Capital Investment Requests



# DOC by the Numbers

**Footprint:** 11 prisons, 336 buildings, over 7.5 million square feet

**Operating around the clock:** 24/7/365

**Dedicated Workforce:** Approximately 4,300 employees

**Population:** Approximately 8,300 incarcerated individuals

96% of funding comes from the general fund, highlighting the reliance on state financial support

Strong dependence on capital investment from the legislature to maintain and grow operations





**MISSION:**  
**Transform Lives**  
**for a Safer**  
**Minnesota**

**95%**  
of those who are  
incarcerated will  
**be back in our**  
**communities.**

LIBRARY  
BOOK RETURN

# Asset Preservation: \$60.574M in GO bonds, \$5M in cash

**33%:**

Department of Correction's  
portion of state agency  
deferred maintenance



**\$732 million:**

Cost estimate to improve  
current DOC assets to  
*fair* condition



Three years ago, this  
estimate was  
**\$631 million**



Deteriorating pipes and vents



"Temporary" window replacements in yellow



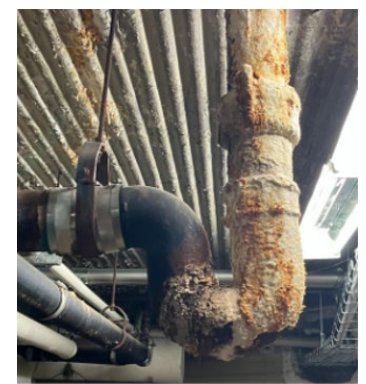
Hole in roof at Stillwater causing massive leaks



Crumbling brick in outside walls



Rusting manual locks on cells



Corroding water pipes



Heavily used building with roof in crisis condition



Mold and buildup from cells turned into showers



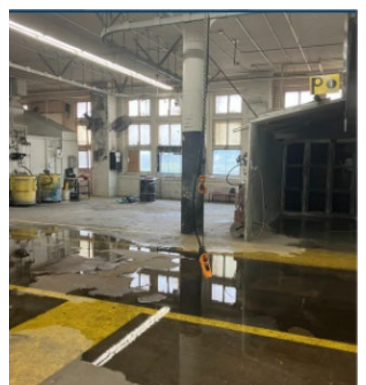
Hole in ceiling that is continuously growing



ADA entrance ramp crumbling apart



Exposed and outdated electrical wiring



Massive flooding in industry building

# DOC Buildings Across the State Have Decades of Deferred Maintenance

Photos are just a *small sample* of the images from state facilities where Minnesotans work and live 24/7.

# Investing in DOC Asset Preservation

- Address aging facilities
  - Many facilities are aging and require funding to maintain or replace outdated systems and structures.
  - Timely repairs help extend the lifespan of new facilities
  - MCF-Stillwater and MCF-St. Cloud are over 100 years old but don't hold the majority of asset preservation projects
- Promotes the safety and security of both staff and incarcerated persons
- Facilities can function more efficiently when they can be structurally maintained, reducing operational disruptions and costs



# Balancing Asset Preservation Needs



## Minnesota Correctional Facility - Rush City

# Education, Treatment, and Programming Space Expansion

**\$57.97 million:**

Renovation of 16,000 sq ft  
and expansion 28,000 sq ft





# Rush City Programming Expansion

---

MCF-Rush City was built to be single-bunked and with minimal programming space.

---

Today, it is double-bunked with a critical shortage of available classroom, treatment, and programming space.

---

It is the newest DOC facility and will be in use for many years to come.

---

Roughly 25% of IPs are on idle status and not participating in programming.

---

Warehousing individuals creates less safe conditions for all who are incarcerated and work at the prison.



# Why Expand?

195 men incarcerated at Rush City do not have a high school diploma or GED.

There is almost no post-secondary education opportunities.



The enormous racial disparities in our criminal justice are prominently clear at Rush City; 55% of individuals incarcerated there are Black, 7% are Native American.



Some of the highest risk and highest need individuals are incarcerated at the Rush City facility.



Over 50% of men at Rush City are estimated to require behavioral health treatment.



Over 328 men incarcerated at Rush City are on a waitlist for sex offense treatment.

# Community Impacts



Rehabilitative programs not only support the well-being of the individual but also have a profound, positive impact on their families



73% of those who are incarcerated are parents. When they attain a higher education, their kids are more likely to as well.



Post-secondary education, sex offense treatment, job training, and behavioral health treatment are all proven to lower recidivism levels – meaning fewer victims and safer communities.



Mission:

*Transform Lives for a Safer Minnesota*

